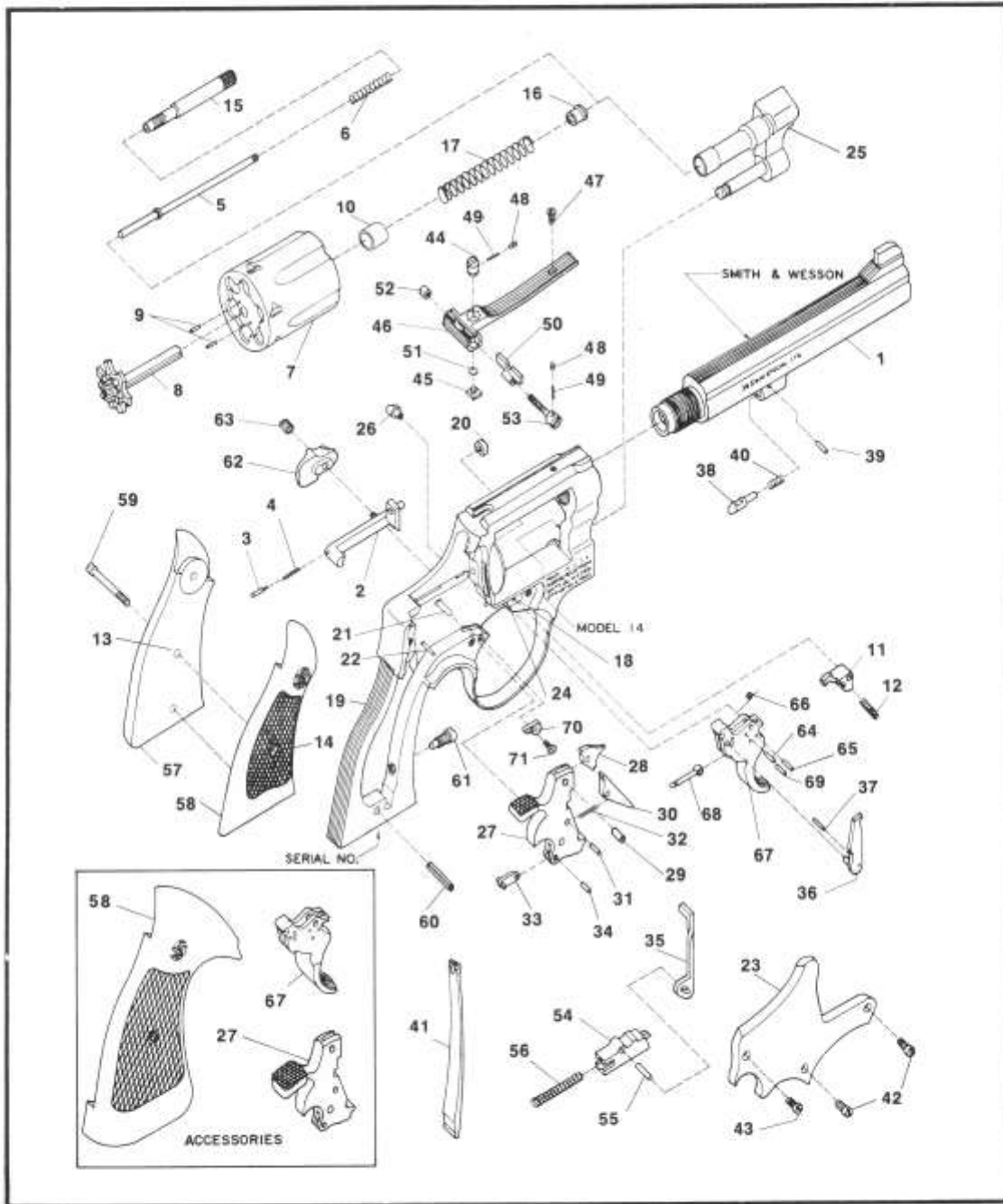


MODEL NO. 14 K-38 MASTERPIECE K FRAME .38 CALIBER REVOLVER



EXPLODED VIEW DIAGRAM.

MODEL 14

MODEL NO. 14
K FRAME .38 CALIBER REVOLVER
PARTS PRICE SCHEDULE

View #	Part Number	Part Description	View #	Part Number	Part Description
1	050980000	Barrel, 6"	44-53	040810000	Rear Sight Assembly, Blue
1	059370000	Barrel, 8 $\frac{3}{4}$ "			Includes:
-	050020000	Barrel Pin, N.I.	44	051020000	Rear Sight Elevation Nut
2	045770000	Bolt	45	071800000	Rear Sight Elevation Stud
3	070980000	Bolt Plunger	46	057860000	Rear Sight Leaf
4	070200000	Bolt Plunger Spring	47	030920000	Rear Sight Leaf Screw
5	049890000	Center Pin	48	071580000	Rear Sight Plunger
6	074640000	Center Pin Spring	49	071590000	Rear Sight Plunger Spring
7-10	033260000	Cylinder Assembly	50	040710000	Rear Sight Slide
		Includes:	51	051050000	Rear Sight Spring Clip
7	046300000	Cylinder (1)	52	051070000	Rear Sight Windage Nut
8	046240000	* Extractor	53	071880000	Rear Sight Windage Screw
9	050140000	Extractor Pin	44-53	040890000	Rear Sight Ass'y., White Outline
10	045550000	Gas Ring			Includes:
11	053570000	Cylinder Stop	50	040760000	Rear Sight Slide, W. O.
12	070550000	Cylinder Stop Spring	54-55	041650000	Rebound Slide Assembly
13	040670000	Escutcheon			Includes:
14	040680000	Escutcheon Nut	54	041650000	Rebound Slide (1)
15	054550000	Extractor Rod	55	050830000	Rebound Slide Pin
16	076850000	Extractor Rod Collar	56	050740000	Rebound Slide Spring
17	075460000	Extractor Spring	56	053870000	Rebound Slide Spring, S.A.
18-25	045490000	*Frame Assembly, Sq. Butt	57-59	161070000	Stock Ass'y., Ckrd. Walnut, Sq.
		Includes:			Includes:
18	031540000	Cylinder Stop Stud	57	032450000	Stock, left (1)
19	-	* Frame (1)	58	032460000	Stock, right (1)
20	050360000	Hammer Nose Bushing	59	071910000	Stock Screw
21	031550000	Hammer Stud	57-59	164200000	Stock Ass'y., Tgt., Ckrd. Walnut
22	050790100	Rebound Slide Stud			Includes:
23	051290000	* Sideplate		045600000	Stock, left (1) N.I.
24	050780200	Trigger Stud	58	071900000	Stock, right (1)
25	044670000	* Yoke	59	072630000	Stock Screw
26	032900000	Frame Lug	60	050620000	Stock Pin
27-34	043550000	Hammer Assembly, .375"	61	050640000	Strain Screw
		Includes:	62	055850000	Thumbpiece
27	050930000	Hammer (1)	63	050710000	Thumbpiece Nut
28	051330000	Hammer Nose	64-69	043560000	Trigger Ass'y., .265" Serrated
29	050340000	Hammer Nose Rivet			Includes:
30	051130000	Sear	64	070190000	Hand Spring Pin
31	070190000	Sear Pin	65	070190000	Hand Spring Torsion Pin
32	070200000	Sear Spring	66	051180000	Hand Torsion Spring
33	070210000	Stirrup	67	050720000	Trigger (1)
34	070190000	Stirrup Pin	68	070270000	Trigger Lever
27-34	043770000	Hammer Ass'y., S.A.	69	070190000	Trigger Lever Pin
		Includes:	64-69	043840000	Trigger Ass'y., Single Action .500" ...
27	053840000	Hammer, S.A. (1)			Includes:
27-34	043760000	Hammer Ass'y., Tgt., .500"	67	053860000	Trigger, S.A.
		Includes:	64-69	046780000	Trigger Ass'y., Tgt., .400" Serrated ...
27	052120000	Hammer, Tgt. (1)			Includes:
35	050840000	Hammer Block	67	046650000	Trigger, Tgt. (1)
36	077680000	Hand	70	074430000	Trigger Stop .500"
37	070110000	Hand Pin	70	074440000	Trigger Stop, S.A.
38	050430000	Locking Bolt	71	030920000	Trigger Stop Screw
39	050440000	Locking Bolt Pin			
40	050450000	Locking Bolt Spring			
41	050470000	Mainspring			
42	050490000	Plate Screw, Crowned			
43	030910000	Plate Screw, Flat Head			

* Requires factory installation.

Note (1): Sold as an assembly only.

N.I. = Not illustrated.

SPECIFY MODEL NUMBER, FINISH, PART NUMBER AND PART NAME WHEN ORDERING PARTS.