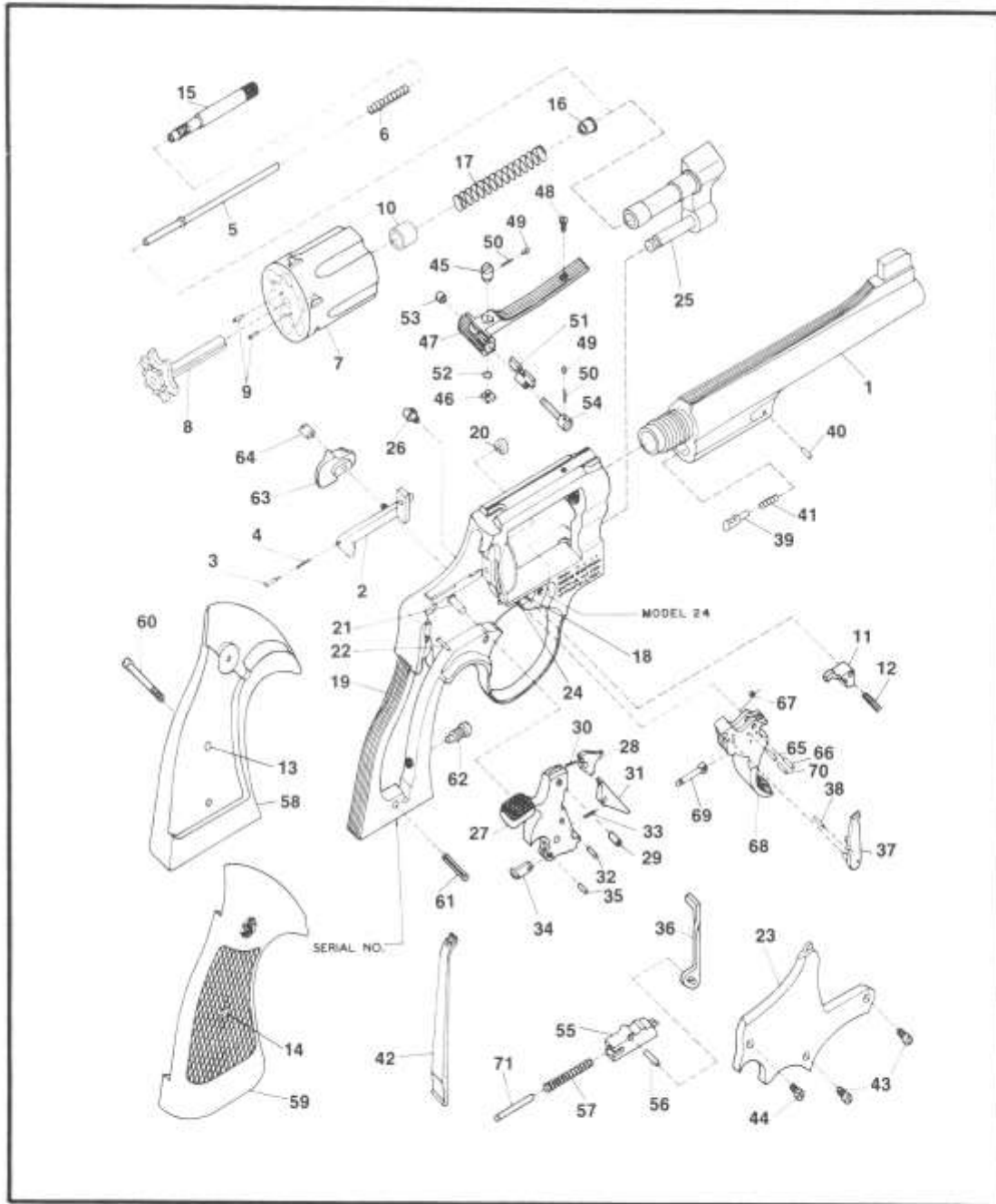


MODEL NO. 24

1950 .44 TARGET REVOLVER

N-FFRAME .44 CALIBER REVOLVER



EXPLODED VIEW DIAGRAM

MODEL 24

MODEL NO. 24 N-FRAME .44 CALIBER REVOLVER PARTS PRICE SCHEDULE

View #	Part Number	Part Description	View #	Part Number	Part Description
1	030550000	Barrel, 4 1/8"	39	054290000	Locking Bolt
1	030720000	Barrel, 6 1/2"	40	054310000	Locking Bolt Pin
2	046990000	Bolt	41	050450000	Locking Bolt Spring
3	075340000	Bolt Plunger	42	050470000	Mainspring
4	070200000	Bolt Plunger Spring	43	050490000	Plate Screw, Crowned
5	049920000	Center Pin	44	030910000	Plate Screw, Flat Head
6	074640000	Center Pin Spring	45-54	030940000	Rear Sight Assembly
7-10	030570000	Cylinder Assembly			Includes:
		Includes:	45	051020000	Rear Sight Elevation Nut
7	030570000	Cylinder (1)	46	071800000	Rear Sight Elevation Stud
8	047590000	* Extractor	47	052190000	Rear Sight Leaf
9	050140000	Extractor Pin	48	030920000	Rear Sight Leaf Screw
10	045990000	Gas Ring	49	071580000	Rear Sight Plunger
11	053570000	Cylinder Stop	50	071590000	Rear Sight Plunger Spring
12	070550000	Cylinder Stop Spring	51	040710000	Rear Sight Slide, .146"
13	040670000	Escutcheon	52	051050000	Rear Sight Spring Clip
14	040680000	Escutcheon Nut	53	051070000	Rear Sight Windage Nut
15	054560000	Extractor Rod	54	071880000	Rear Sight Windage Screw
16	076870000	Extractor Rod Collar	55-56	041650000	Rebound Slide Assembly
17	075460000	Extractor Spring			Includes:
18-25	030580000	* Frame Assembly	55	041650000	Rebound Slide (1)
		Includes:	56	050830000	Rebound Slide Pin
18	031540000	Cylinder Stop Stud	57	050740000	Rebound Slide Spring
19	030580000	* Frame (1)	58-60	165100000	Stock Assembly, Tgt., Chkrd.,
20	050360000	Hammer Nose Bushing			Goncalo Alves
21	031550000	Hammer Stud			Includes:
22	031540000	Rebound Slide Stud	58	059130000	Stock, left (1)
23	054300000	* Sideplate	59	059120000	Stock, right (1)
24	050780200	Trigger Stud	60	072630000	Stock Screw
25	055000000	* Yoke	61	050620000	Stock Pin
26	031030000	Frame Lug	62	050640000	Strain Screw
27-35	043860000	Hammer Assembly, .400" wide	63	055850000	Thumbpiece
		Includes:	64	050710000	Thumbpiece Nut
27	054190000	Hammer (1)	65-70	043560000	Trigger Assembly, .265" serrated
28	054180000	Hammer Nose			Includes:
29	050340000	Hammer Nose Rivet	65	070190000	Hand Spring Pin
30	057500000	Hammer Nose Spring	66	070190000	Hand Spring Torsion Pin
31	051130000	Sear	67	051180000	Hand Torsion Spring
32	070190000	Sear Pin	68	031140000	Trigger (1)
33	070200000	Sear Spring	69	070270000	Trigger Lever
34	070210000	Stirrup	70	070190000	Trigger Lever Pin
35	070190000	Stirrup Pin	65-70	046780000	Trigger Assembly, .400" serrated
27-35	043870000	Hammer Assembly, .500" wide			Includes:
		Includes:	68	031160000	Trigger (1)
27	031370000	Hammer (1)	71	075000000	Trigger Stop Rod
36	054230000	Hammer Block			
37	074930000	Hand			
38	070110000	Hand Pin			

* Requires Factory Installation.
Note (1): Sold as an assembly only.

SPECIFY MODEL NUMBER, FINISH, PART NUMBER AND PART NAME WHEN ORDERING PARTS.