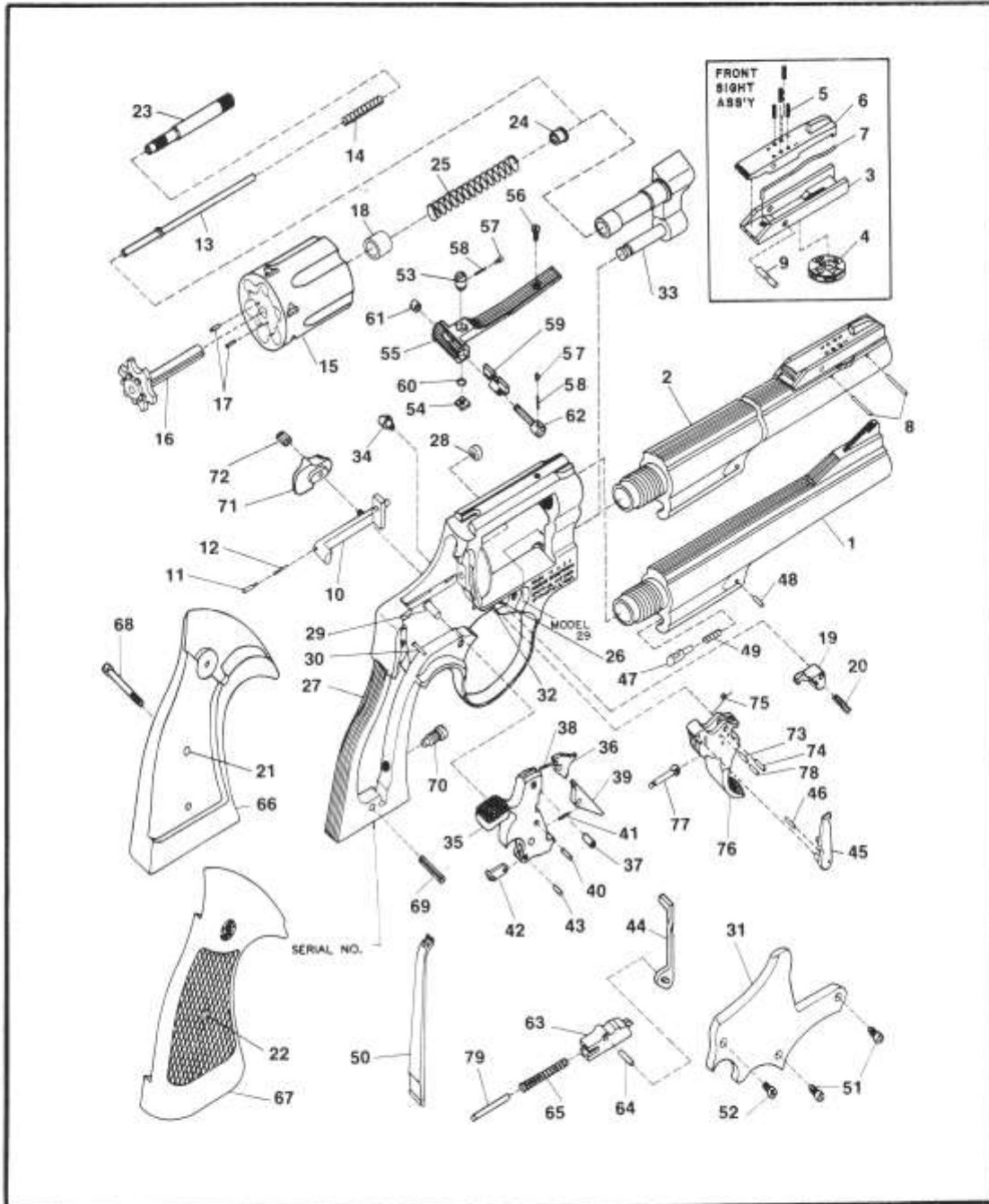


MODEL NO. 29-3

.44 MAGNUM REVOLVER

N FRAME .44 CALIBER REVOLVER



EXPLODED VIEW DIAGRAM.

MODEL 29

MODEL NO. 29-3
N FRAME .44 CALIBER REVOLVER
PARTS PRICE SCHEDULE

<i>View #</i>	<i>Part Number</i>	<i>Part Description</i>	<i>View #</i>	<i>Part Number</i>	<i>Part Description</i>
1	031750000	*Barrel, 3"	51	050490000	Plate Screw, Crowned
1	045890000	*Barrel, 4 1/8"	52	030910000	Plate Screw, Flat Head
1	033250000	*Barrel, 6"	53-62	040960000	Rear Sight Ass'y., 4 3/8", 6", 6 1/2", W.O.
1	045910000	*Barrel, 8 1/8"			Includes:
2-9	049450000	*Barrel, Ass'y., 10 1/4", with front sight	53	051020000	Rear Sight Elevation Nut
		Includes:	54	071800000	Rear Sight Elevation Stud
2	047740000	* Barrel, 10 1/4"	55	052190000	Rear Sight Leaf
3	048500000	Front Sight Base	56	030920000	Rear Sight Leaf Screw
4	048600000	Front Sight Cam	57	071580000	Rear Sight Plunger
5	048640000	Front Sight Elevation Screw	58	071590000	Rear Sight Plunger Spring
6	048590000	Front Sight Leaf	59	051090000	Rear Sight Slide
7	048630000	Front Sight Leaf Spring	60	051050000	Rear Sight Spring Clip
8	052030000	Front Sight Pin	61	051070000	Rear Sight Windage Nut
9	048620000	Front Sight Pivot Pin	62	071880000	Rear Sight Windage Screw
—	058100000	Barrel Pin, N.I.	53-62	040980000	Rear Sight Ass'y., 8 1/8", W.O.
10	046990000	Bolt			Includes:
11	075340000	Bolt Plunger	59	040730000	Rear Sight Slide
12	070200000	Bolt Plunger Spring	53-62	031520000	Rear Sight Ass'y., 10 1/4"
13	049920000	Center Pin			Includes:
14	074640000	Center Pin Spring	59	031530000	Rear Sight Slide
15-18	033320000	*Cylinder Assembly	63-64	041650000	Rebound Slide Assembly
		Includes:			Includes:
15	033320000	* Cylinder (1)	63	041650000	Rebound Slide (1)
16	047590000	* Extractor	64	050830000	Rebound Slide Pin
17	050140000	Extractor Pin	65	050740000	Rebound Slide Spring
18	045550000	Gas Ring	66-68	165100000	Stock Ass'y., Tgt., Ckrd. Goncalo Alves
19	053570000	Cylinder Stop			Includes:
20	070550000	Cylinder Stop Spring	66	059130000	Stock, left (1)
21	040670000	Escutcheon	67	059120000	Stock, right (1)
22	040680000	Escutcheon Nut	68	072630000	Stock Screw
23	054560000	Extractor Rod	69	050620000	Stock Pin
24	076870000	Extractor Rod Collar	70	050640000	Strain Screw
25	075460000	Extractor Spring	71	055850000	Thumbpiece
26-33	034250000	*Frame Assembly	72	050710000	Thumbpiece Nut
		Includes:	73-78	046780000	Trigger Ass'y., Tgt., .400" serrated
26	031540000	Cylinder Stop Stud			Includes:
27	045780000	* Frame (1)	73	070190000	Hand Spring Pin
28	050360000	Hammer Nose Bushing	74	070190000	Hand Spring Torsion Pin
29	031550000	Hammer Stud	75	051180000	Hand Torsion Spring
30	031540000	Rebound Slide Stud	76	031160000	Trigger (1)
31	054300000	* Sideplate	77	070270000	Trigger Lever
32	050780200	Trigger Stud	78	070190000	Trigger Lever Pin
33	055000000	* Yoke	79	053060000	Trigger Stop Rod
34	031030000	Frame Lug			
35-43	043870000	Hammer Ass'y., Target, .500" wide			
		Includes:			
35	031370000	Hammer (1)			
36	054180000	Hammer Nose			
37	050340000	Hammer Nose Rivet			
38	057500000	Hammer Nose Spring			
39	051130000	Sear			
40	070190000	Sear Pin			
41	070200000	Sear Spring			
42	070210000	Stirrup			
43	070190000	Stirrup Pin			
44	054230000	Hammer Block			
45	074930000	Hand			
46	070110000	Hand Pin			
47	054290000	Locking Bolt			
48	054310000	Locking Bolt Pin			
49	050450000	Locking Bolt Spring			
50	050470000	Mainspring			

* Requires factory installation.
Note (1): Sold as an assembly only.
N.I. * Not illustrated.

SPECIFY MODEL NUMBER, FINISH, PART NUMBER AND PART NAME WHEN ORDERING PARTS.