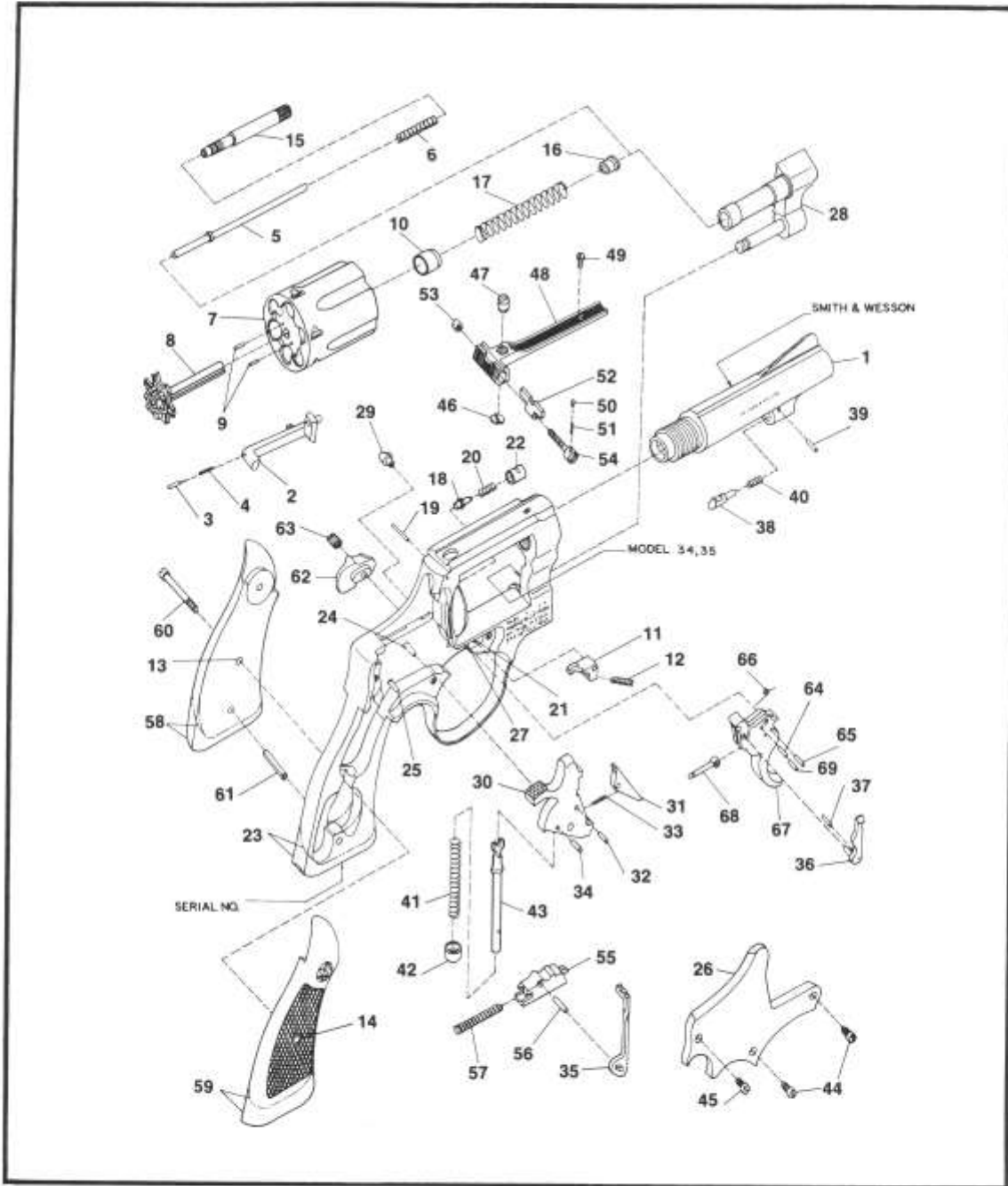


Exploded parts drawing and parts list for Smith & Wesson firearms.

MODEL NO. 34-1
1953 .22/.32 KIT GUN REVOLVER
MODEL NO. 35
.22/.32 TARGET REVOLVER
J FRAME .22 CALIBER REVOLVER



EXPLODED VIEW DIAGRAM.

MODEL 34 MODEL 35

MODEL NO. 34-1 MODEL NO. 35 J FRAME .22 CALIBER REVOLVER PARTS PRICE SCHEDULE

View #	Part Number	Part Description	View #	Part Number	Part Description
1	056750000	Barrel, 2"	46-54	057920000	Rear Sight Assembly, Blue
1	044900000	Barrel, 4"			Includes:
—	052030000	Barrel Pin, N.I.	46	056530000	Rear Sight Elevation Click Plug
2	047390000	Bolt	47	053630000	Rear Sight Elevation Screw
3	070980000	Bolt Plunger	48	057910000	Rear Sight Leaf
4	070200000	Bolt Plunger Spring	49	053640000	Rear Sight Leaf Screw
5	049840000	Center Pin, 2" barrel	50	071580000	Rear Sight Plunger
5	049850000	Center Pin, 4" & 6" barrel	51	071590000	Rear Sight Plunger Spring
6	052260000	Center Pin Spring	52	053620000	Rear Sight Slide
7-10	033420000	Cylinder Assembly	53	051070000	Rear Sight Windage Nut
		Includes:	54	071620000	Rear Sight Windage Screw
7	033420000	Cylinder (1)	55-56	056160000	Rebound Slide Assembly
8	052360000	* Extractor			Includes:
9	050140000	Extractor Pin	55	056160000	Rebound Slide (1)
10	052450000	Gas Ring	56	053150000	Rebound Slide Pin
11	033140000	Cylinder Stop	57	050740000	Rebound Slide Spring
12	041300000	Cylinder Stop Spring	58-60	161050000	Stock Ass'y., Round Butt, Ckrd. Walnut
13	040670000	Escutcheon			Includes:
14	040680000	Escutcheon Nut	58	032390000	Stock, left (1)
15	052530000	Extractor Rod, 2" barrel	59	032400000	Stock, right (1)
15	057900000	Extractor Rod, 4" & 6" barrel	60	072550000	Stock Screw
16	057890000	Extractor Rod Collar	58-60	161060000	Stock Ass'y., Square Butt, Ckrd. Walnut
17	075810000	Extractor Spring			Includes:
18	052970000	Firing Pin	58	032410000	Stock, left (1)
19	053540000	Firing Pin Bushing Pin	59	032420000	Stock, right (1)
20	051650000	Firing Pin Spring	60	072550000	Stock Screw
21-28	034950000	*Frame Ass'y., Sq. Butt	61	050620000	Stock Pin
		Includes:	62	056140100	Thumbpiece
21	034950000	Frame (1)	63	050710000	Thumbpiece Nut
21-28	034870000	*Frame Ass'y., Rd. Butt	64-69	049340000	Trigger Ass'y., 2" & 4" barrel
		Includes:			Includes:
21	052780000	Cylinder Stop Stud	64	070820000	Hand Spring Pin
22	051590000	Firing Pin Bushing	65	070810000	Hand Spring Torsion Pin
23	—	* Frame (1)	66	053020000	Hand Torsion Spring
24	052770000	Hammer Stud	67	031180000	Trigger (1)
25	052780000	Rebound Slide Stud	68	070970000	Trigger Lever
26	053190000	* Sideplate	69	070810000	Trigger Lever Pin
27	052780000	Trigger Stud			
28	058030000	* Yoke			
29	052820000	Frame Lug			
30-34	043620000	Hammer Ass'y.,			
		Includes:			
30	031110000	Hammer (1)			
31	053170000	Sear			
32	070810000	Sear Pin			
33	070200000	Sear Spring			
34	054870000	Stirrup Pin			
35	052940000	Hammer Block			
36	052950000	Hand			
37	070790000	Hand Pin			
38	051470000	Locking Bolt, 2"			
38	050430000	Locking Bolt, 4"			
39	050440000	Locking Bolt Pin			
40	050450000	Locking Bolt Spring			
41	057490000	Mainspring			
42	052160000	Mainspring Rod Swivel			
43	054860000	Mainspring Stirrup			
44	053110000	Plate Screw, Crowned			
45	050910000	Plate Screw, Flat Head			

* Requires factory installation.
Note (1): Sold as an assembly only.
N.I. = Not illustrated.

SPECIFY MODEL NUMBER, FINISH, PART NUMBER AND PART NAME WHEN ORDERING PARTS.