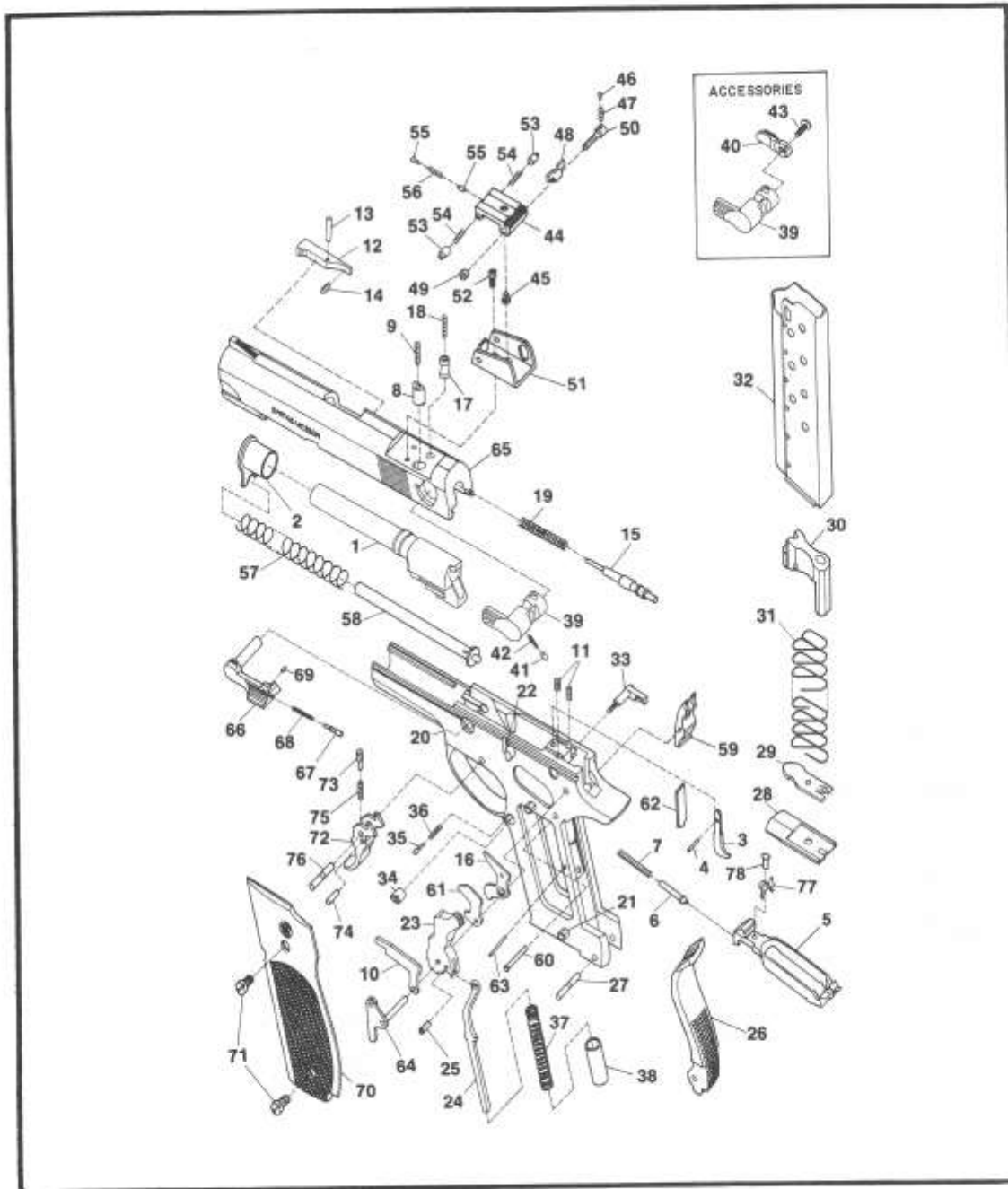


MODEL NO. 539 9 MM AUTOMATIC PISTOL DOUBLE ACTION



EXPLODED VIEW DIAGRAM

MODEL 539

MODEL NO. 539 9 MM AUTOMATIC PISTOL DOUBLE ACTION PARTS PRICE SCHEDULE

View #	Part Number	Part Description	View #	Part Number	Part Description
1	069580000	Barrel	44-50	063730000	Rear Sight Body Ass'y.
2	060000000	Barrel Bushing			Includes:
3-4	101390000	Disconnecter Assembly	44	063750000	Rear Sight Body
		Includes:	45	068450000	Rear Sight Elevation Screw
3	069540000	Disconnecter (1)	46	071580000	Rear Sight Plunger
4	068040000	Disconnecter Pin	47	071590000	Rear Sight Plunger Spring
5	101350000	Drawbar	48	060760000	Rear Sight Slide
6	061100000	Drawbar Plunger	49	051070000	Rear Sight Windage Nut
7	068070000	Drawbar Plunger Spring	50	068480000	Rear Sight Windage Screw
8	068860000	Ejector Depressor Plunger	51	063740000	Rear Sight Base
9	060140000	Ejector Depressor Plunger Spring	52	069380000	Rear Sight Base Screw
10	103710000	Ejector Magazine Depressor	53	068440000	Rear Sight Body Plunger
11	060170000	Ejector Spring	54	063800000	Rear Sight Body Plunger Spring
12	063080000	Extractor	55	063780000	Rear Sight Elevation Plunger
13	060780000	Extractor Pin	56	063810000	Rear Sight Elevation Spring
14	063310000	Extractor Spring	57	060480000	Recoil Spring
15	100280000	Firing Pin	58	100220000	Recoil Spring Guide Assembly
16	100290000	Firing Pin Safety Lever			Includes:
17	069250000	Firing Pin Safety Lever Plunger	—	060610000	Recoil Spring Guide, N.I. (1)
18	063890000	Firing Pin Safety Lever Spring	—	100210000	Recoil Spring Guide Bushing, N.I. (1)
19	100300000	Firing Pin Spring	—	060630000	Recoil Spring Guide Plunger, N.I. (1)
20-22	069410000	*Frame Assembly	—	060640000	Recoil Spring Guide Plunger Spring,
		Includes:			N.I. (1)
20	064650000	* Frame	59	100920000	Sear
21	060270000	Frame Stud	60	060660000	Sear Pin
22	060810000	Slide Stop Button	61	103730000	Sear Release Lever
23-25	104010000	Hammer Assembly	62	104230000	Sear Spring
		Includes:	63	063940000	Sear Spring Retaining Pin
23	063900000	Hammer (1)	64	061170000	Sideplate
24	061510000	Stirrup	65	100020000	Slide
25	061520000	Stirrup Pin	66-69	063600000	Slide Stop Assembly
—	060290000	Hammer Pin, N.I.			Includes:
26	061450000	Insert	66	061250000	Slide Stop (1)
27	060310000	Insert Pin	—	060820000	Slide Stop Pin, N.I.
28-32	060340000	Magazine Assembly	67	060830000	Slide Stop Plunger
		Includes:	68	068710000	Slide Stop Plunger Spring
28	061850000	Magazine Butt Plate	69	063260000	Slide Stop Spiral Pin
29	060360000	Magazine Butt Plate Catch	70-71	161170000	Stock Ass'y., Ckrd. Walnut
30	063210000	Magazine Follower			Includes:
31	061480000	Magazine Spring	70	061330000	Stock, Left (1)
32	060320000	Magazine Tube	—	061320000	Stock, right (1) N.I.
33	064740000	Magazine Catch	71	062640000	Stock Screw
34	060400000	Magazine Catch Nut	72-75	063610000	Trigger Assembly
35	068290000	Magazine Catch Plunger			Includes:
36	068300000	Magazine Catch Plunger Spring	72	061530000	Trigger (1)
37	061490000	Mainspring	73	068780000	Trigger Plunger
38	061280000	Mainspring Plunger	74	060110000	Trigger Plunger Pin
39	069370000	Manual Safety	75	061220000	Trigger Plunger Spring
39	101020000	Manual Safety, Ambidextrous	76	060310000	Trigger Pin
40	100170000	Manual Safety Right Side Lever	77	101260000	Trigger Play Spring
41	068370000	Manual Safety Plunger	78	061260000	Trigger Play Spring Rivet
42	063720000	Manual Safety Plunger Spring			
43	105140000	Manual Safety Screw			

* Requires factory installation.
Note (1): Sold as an assembly only.
N.I. = Not illustrated.

SPECIFY MODEL NUMBER, FINISH, PART NUMBER AND PART NAME WHEN ORDERING PARTS.