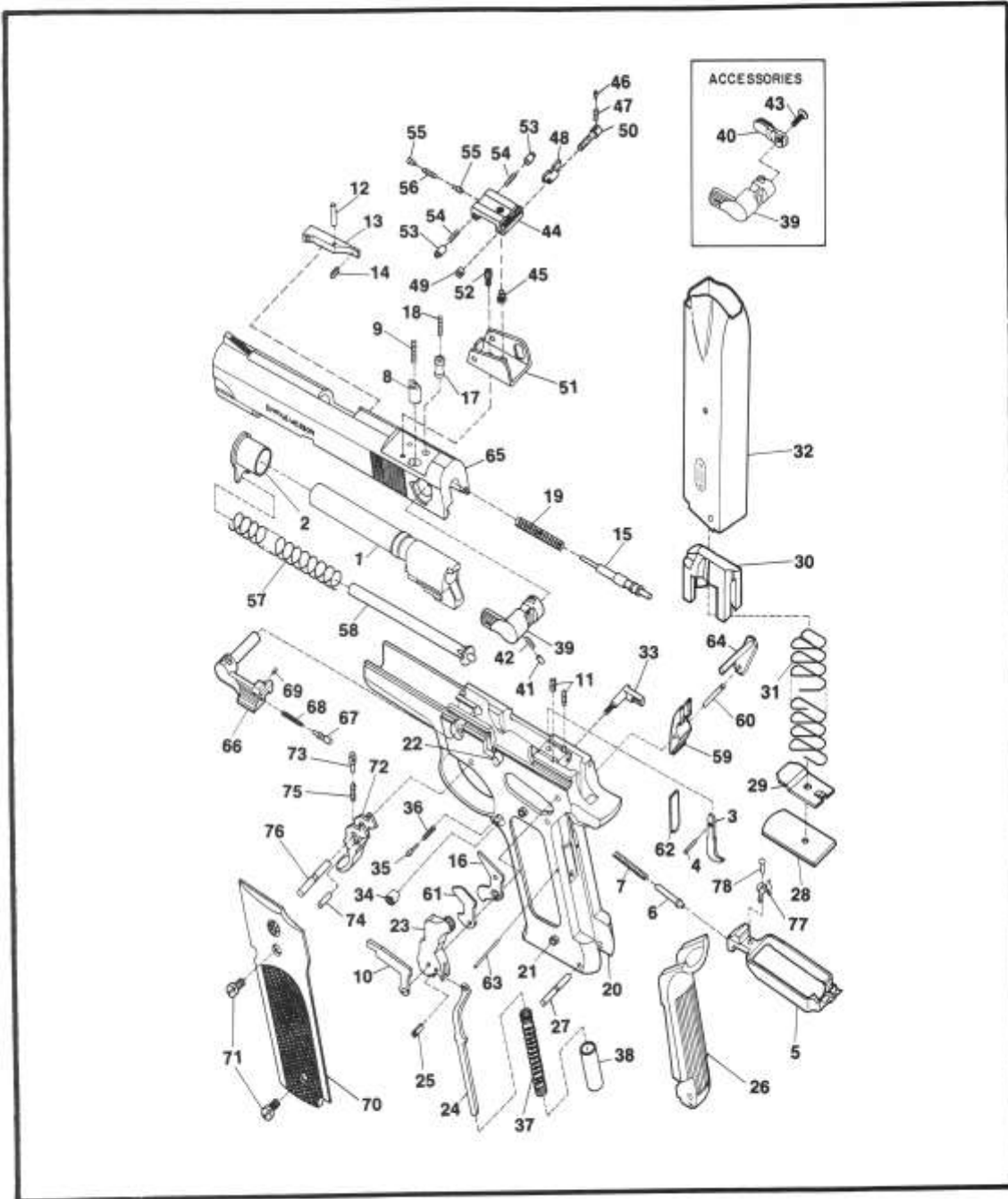


MODEL NO. 559 9MM AUTOMATIC PISTOL DOUBLE ACTION



EXPLODED VIEW DIAGRAM.

MODEL 559

MODEL NO. 559
9 MM AUTOMATIC PISTOL DOUBLE ACTION
PARTS PRICE SCHEDULE

View#	Part Number	Part Description	View #	Part Number	Part Description
1	069580000	Barrel	44-50	063730000	Rear Sight Body Ass'y.
2	060000000	Barrel Bushing			Includes:
3-4	101390000	Disconnecter Assembly	44	063750000	Rear Sight Body
		Includes:	45	068450000	Rear Sight Elevation Screw
3	069540000	Disconnecter (1)	46	071580000	Rear Sight Plunger
4	068040000	Disconnecter Pin	47	071590000	Rear Sight Plunger Spring
5	101370000	Drawbar	48	060760000	Rear Sight Slide
6	061100000	Drawbar Plunger	49	051070000	Rear Sight Windage Nut
7	068070000	Drawbar Plunger Spring	50	068480000	Rear Sight Windage Screw
8	068860000	Ejector Depressor Plunger	51	063740000	Rear Sight Base
9	060140000	Ejector Depressor Plunger Spring	52	069380000	Rear Sight Base Screw
10	060150000	Ejector Magazine Depressor	53	068440000	Rear Sight Body Plunger
11	060170000	Ejector Spring	54	063800000	Rear Sight Body Plunger Spring
12	101240000	Extractor	55	063780000	Rear Sight Elevation Plunger
13	060780000	Extractor Pin	56	063810000	Rear Sight Elevation Spring
14	063310000	Extractor Spring	57	060480000	Recoil Spring
15	103650000	Firing Pin	58	100220000	Recoil Spring Guide Assembly
16	100290000	Firing Pin Safety Lever			Includes:
17	069250000	Firing Pin Safety Lever Plunger	58	060610000	Recoil Spring Guide, N.I. (1)
18	063890000	Firing Pin Safety Lever Spring	—	060620000	Recoil Spring Guide Bushing, N.I. (1)
19	100300000	Firing Pin Spring	—	060630000	Recoil Spring Guide Plunger, N.I. (1)
20-22	069500000	*Frame Assembly	—	060640000	Recoil Spring Guide Plunger Spring, N.I. (1)
		Includes:	59	100920000	Sear
20	064690000	* Frame	60	062670000	Sear Pin
21	062540000	Frame Stud	61	103730000	Sear Release Lever
22	063520000	Slide Stop Button	62	100010000	Sear Spring
23-25	104010000	Hammer Assembly	63	063040000	Sear Spring Retaining Pin
		Includes:	64	062680000	Sideplate
23	063900000	Hammer (1)	65	100020000	Slide, Adjustable Sight
24	061510000	Stirrup	66-69	061310000	Slide Stop Assembly
25	061520000	Stirrup Pin			Includes:
—	062550000	Hammer Pin, N.I.	66	061190000	Slide Stop (1)
26	062560000	Insert	67	060830000	Slide Stop Plunger
27	062570000	Insert Pin	68	063030000	Slide Stop Plunger Spring
28-32	062580000	Magazine Assembly	69	064700000	Slide Stop Spiral Pin
		Includes:	70-71	161110000	Stock Ass'y., Black Ckrd. Nylon
28	062600000	Magazine Butt Plate			Includes:
29	063250000	Magazine Butt Plate Catch	70	062710000	Stock, left (1)
30	060240000	Magazine Follower	—	062720000	Stock, right (1) N.I.
31	062650000	Magazine Spring	71	062640000	Stock Screw
32	062660000	Magazine Tube	72-75	063610000	Trigger Assembly
33	064720000	Magazine Catch			Includes:
34	063390000	Magazine Catch Nut	72	061530000	Trigger (1)
35	068290000	Magazine Catch Plunger	73	068780000	Trigger Plunger
36	068300000	Magazine Catch Plunger Spring	74	060110000	Trigger Plunger Pin
37	103620000	Mainspring	75	061220000	Trigger Plunger Spring
38	103500000	Mainspring Plunger	76	062570000	Trigger Pin
39	069370000	Manual Safety	77	101260000	Trigger Play Spring
39	101020000	Manual Safety, Ambidextrous	78	061260000	Trigger Play Spring Rivet
40	100170000	Manual Safety Right Side Lever			
41	068370000	Manual Safety Plunger			
42	063720000	Manual Safety Plunger Spring			
43	105140000	Manual Safety Screw			

* Requires factory installation.

Note (1): Sold as an assembly only.

N.I. = Not illustrated.

SPECIFY MODEL NUMBER, FINISH, PART NUMBER AND PART NAME WHEN ORDERING PARTS.