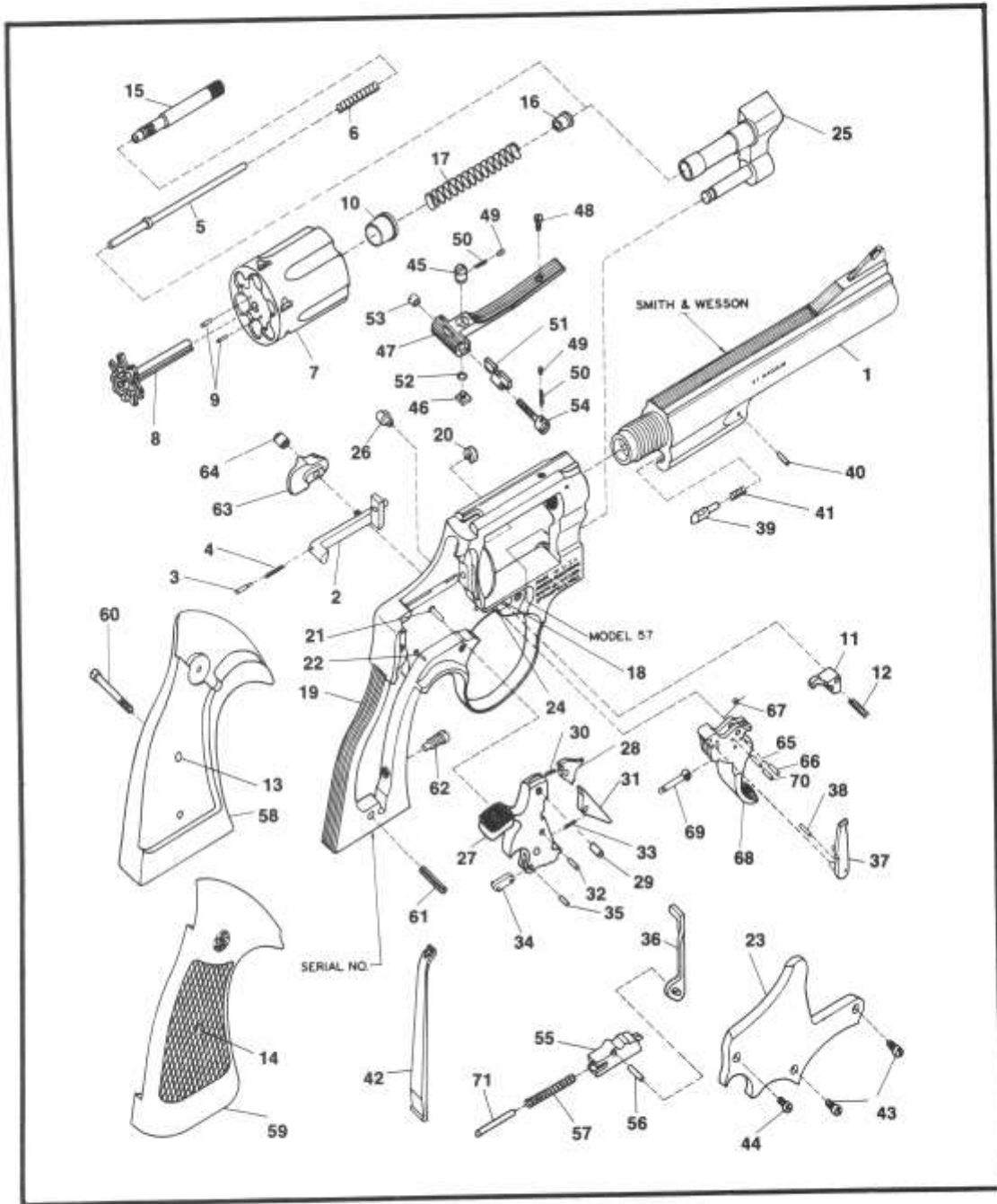


MODEL NO. 57-1

.41 MAGNUM REVOLVER

N FRAME .41 CALIBER REVOLVER



EXPLODED VIEW DIAGRAM.

MODEL NO. 57-1
N FRAME .41 CALIBER REVOLVER
PARTS PRICE SCHEDULE

<i>View #</i>	<i>Part Number</i>	<i>Part Description</i>	<i>View #</i>	<i>Part Number</i>	<i>Part Description</i>
1	045830000	*Barrel, 4 1/4"	39	054290000	Locking Bolt
1	045840000	*Barrel, 6"	40	054310000	Locking Bolt Pin
1	045850000	*Barrel, 8 1/4"	41	050450000	Locking Bolt Spring
2	046990000	Bolt	42	050470000	Mainspring
3	075340000	Bolt Plunger	43	050490000	Plate Screw, Crowned
4	070200000	Bolt Plunger Spring	44	030910000	Plate Screw, Flat Head
5	049920000	Center Pin	45-54	040960000	Rear Sight Ass'y., 4 1/4" & 6", White Outline
6	074640000	Center Pin Spring			Includes:
7-10	033340000	*Cylinder Assembly	45	051020000	Rear Sight Elevation Nut
		Includes:	46	071800000	Rear Sight Elevation Stud
7	033340000	* Cylinder (1)	47	052190000	Rear Sight Leaf
8	047620000	* Extractor (1)	48	030920000	Rear Sight Leaf Screw
9	050140000	Extractor Pin	49	071580000	Rear Sight Plunger
10	045550000	Gas Ring	50	071590000	Rear Sight Plunger Spring
11	053570000	Cylinder Stop	51	051090000	Rear Sight Slide, 4 1/4" & 6", White Outline
12	070550000	Cylinder Stop Spring	52	051050000	Rear Sight Spring Clip
13	040670000	Escutcheon	53	051070000	Rear Sight Windage Nut
14	040680000	Escutcheon Nut	54	071880000	Rear Sight Windage Screw
15	054560000	Extractor Rod	45-54	040980000	Rear Sight Ass'y., 8 1/4", White Outline
16	076870000	Extractor Rod Collar			Includes:
17	075460000	Extractor Spring	51	040730000	Rear Sight Slide, 8 1/4", White Outline
18-25	034310000	*Frame Assembly	55-56	041650000	Rebound Slide Assembly
		Includes:			Includes:
18	031540000	Cylinder Stop Stud	55	041650000	Rebound Slide (1)
19	—	* Frame	56	050830000	Rebound Slide Pin
20	050360000	Hammer Nose Bushing	57	050740000	Rebound Slide Spring
21	031550000	Hammer Stud	58-60	165100000	Stock Ass'y., Ckrd. Goncalo Alves, Square Butt
22	031540000	Rebound Slide Stud			Includes:
23	054300000	* Sideplate	58	059130000	Stock, Left (1)
24	050780200	Trigger Stud	59	059120000	Stock, Right (1)
25	055000000	* Yoke	60	072630000	Stock Screw
26	059300000	Frame Lug	61	050620000	Stock Pin
27-35	043870000	Hammer Assembly, Target	62	050640000	Strain Screw
		Includes:	63	055850000	Thumbpiece
27	031370000	Hammer (1)	64	050710000	Thumbpiece Nut
28	054180000	Hammer Nose	65-70	046780000	Trigger Assembly, Target
29	050340000	Hammer Nose Rivet			Includes:
30	057500000	Hammer Nose Spring	65	070190000	Hand Spring Pin
31	051130000	Sear	66	070190000	Hand Spring Torsion Pin
32	070190000	Sear Pin	67	051180000	Hand Torsion Spring
33	070200000	Sear Spring	68	031160000	Trigger (1)
34	070210000	Stirrup	69	070270000	Trigger Lever
35	070190000	Stirrup Pin	70	070190000	Trigger Lever Pin
36	054230000	Hammer Block	71	053060000	Trigger Stop Rod
37	074930000	Hand			
38	070110000	Hand Pin			

* Requires factory installation.

Note (1): Sold as an assembly only.

N.I. = Not illustrated.

SPECIFY MODEL NUMBER, FINISH, PART NUMBER AND PART NAME WHEN ORDERING PARTS.