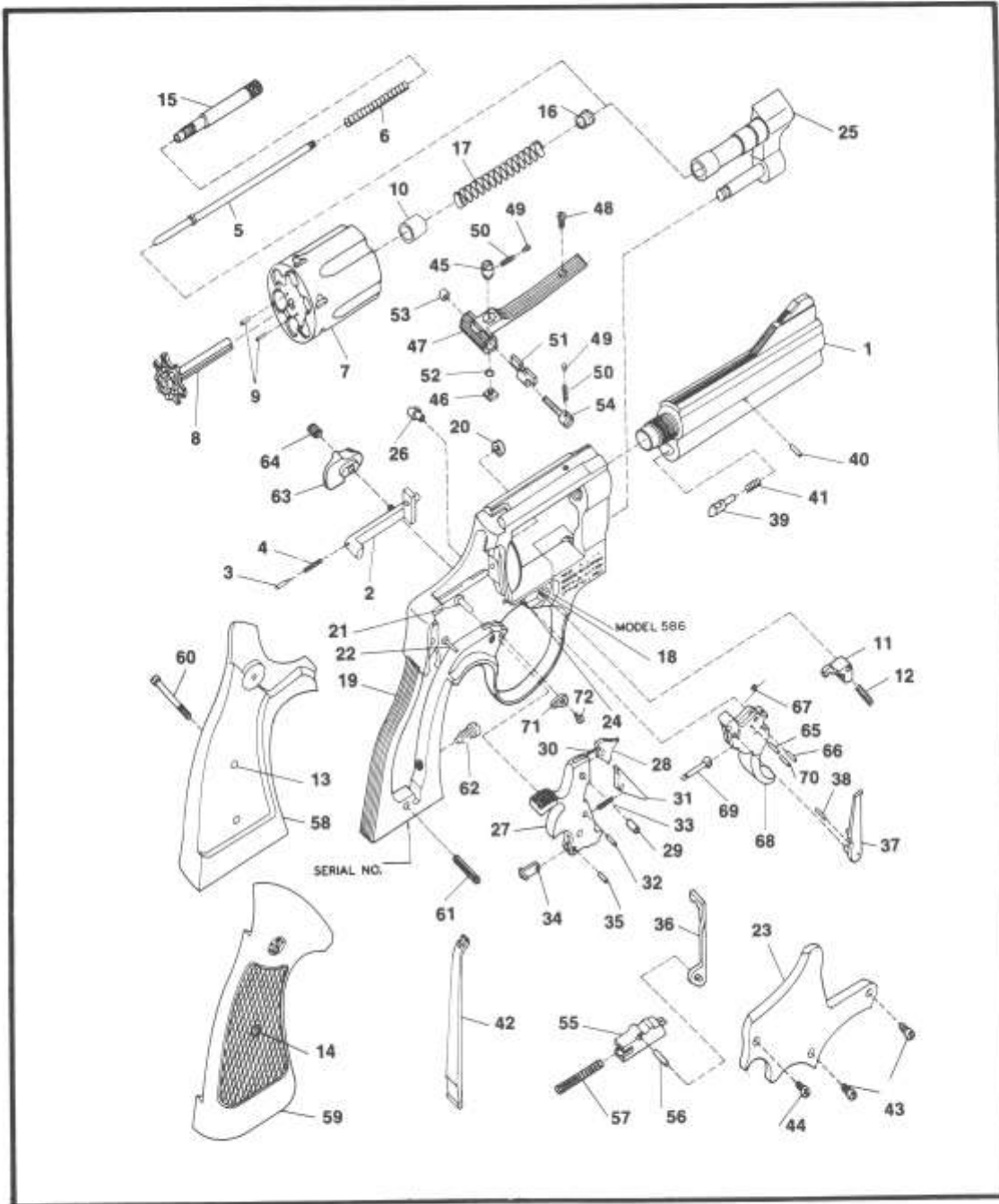


# MODEL NO. 586-1 DISTINGUISHED COMBAT MAGNUM REVOLVER L FRAME .357 CALIBER



EXPLODED VIEW DIAGRAM.

MODEL 586

**MODEL NO. 586-1**  
**L FRAME .357 CALIBER REVOLVER**  
**PARTS PRICE SCHEDULE**

View #	Part Number	Part Description	View #	Part Number	Part Description
1	047310000	*Barrel, 4 1/8", Red Ramp F.S.	33	070200000	Sear Spring
1	047300000	*Barrel, 6", Red Ramp F.S.	34	070210000	Stirrup
1	049520000	*Barrel, 8 3/8", Red Ramp F.S.	35	070190000	Stirrup Pin
1	031710000	Barrel Assy, 6"	36	071150000	Hammer Block
		Includes:	37	077630000	Hand
	031660000	Barrel 6"	38	070110000	Hand Pin
	031630000	Front Sight Pin	39	051470000	Locking Bolt
	048640000	Elevation Screw	40	047350000	Locking Bolt Pin
	031680000	Front Sight Leaf	41	050450000	Locking Bolt Spring
	048630000	Front Sight Leaf Spring	42	050470000	Mainspring
	048580000	Front Sight Base	43	050490000	Plate Screw, Crowned
	048600000	Front Sight Cam	44	030910000	Plate Screw, Flat Head
	048620000	Pivot Pin	45-54	057870000	Rear Sight Assembly
1	031610000	Barrel Assy, 8 3/8"			Includes:
		Includes:	45	051020000	Rear Sight Elevation Nut
	031600000	Barrel 8 3/8"	46	071800000	Rear Sight Elevation Stud
	031630000	Front Sight Pin	47	057860000	Rear Sight Leaf
	048640000	Elevation Screw	48	030920000	Rear Sight Leaf Screw
	031680000	Front Sight Leaf	49	071580000	Rear Sight Plunger
	048630000	Front Sight Leaf Spring	50	071590000	Rear Sight Plunger Spring
	048580000	Front Sight Base	51	051090000	Rear Sight Slide, Blue
	048600000	Front Sight Cam	52	051050000	Rear Sight Spring Clip
	048620000	Pivot Pin	53	051070000	Rear Sight Windage Nut
2	047120000	Bolt	54	071880000	Rear Sight Windage Screw
3	070980000	Bolt Plunger	45-54	040910000	Rear Sight Assy., White Outline
4	070200000	Bolt Plunger Spring			Includes:
5	049890000	Center Pin	51	059000000	Rear Sight Slide, White Outline
6	074640000	Center Pin Spring	55-56	041650000	Rebound Slide Assy.
7-10	031480000	*Cylinder Assembly			Includes:
	031490000	Includes:	55	041650000	Rebound Slide (1)
7	047100000	Cylinder (1)	56	050830000	Rebound Slide Pin
8	047200000	* Extractor	57	050740000	Rebound Slide Spring
9	050140000	Extractor Pin	58-60	164000000	Stock Assy., Tgt. Ckrd. Goncalo Alves
10	045550000	Gas Ring			Includes:
11	053570000	Cylinder Stop	58	032140000	Stock, Left (1)
12	070550000	Cylinder Stop Spring	59	032150000	Stock, Right (1)
13	040670000	Escutcheon	60	072630000	Stock Screw
14	040680000	Escutcheon Nut	61	050620000	Stock Pin
15	054550000	Extractor Rod	62	050640000	Strain Screw
16	076850000	Extractor Rod Collar	63	055850000	Thumbpiece
17	075460000	Extractor Spring	64	050710000	Thumbpiece Nut
18-25	034520000	*Frame Assembly	65-70	033740000	Trigger Assembly, 4" Barrel .312
		Includes:			Includes:
18	031540000	Cylinder Stop Stud	65	070190000	Hand Spring Pin
19	034520000	* Frame (1)	66	070190000	Hand Spring Torsion Pin
20	033690000	Hammer Nose Bushing	67	051180000	Hand Torsion Spring
21	033700000	Hammer Stud	68	050000000	Trigger (1)
22	031540000	Rebound Slide Stud	69	070270000	Trigger Lever
23	033850000	* Side Plate	70	070190000	Trigger Lever Pin
24	033710000	Trigger Stud	71	074430000	Trigger Stop
25	031400000	* Yoke	72	030920000	Trigger Stop Screw
26	031010100	Frame Lug			
—	075890000	Front Sight Blade, Patridge .823" NI			
—	075900000	Front Sight Blade, Patridge .908" NI			
—	050440000	Front Sight Pin, NI			
27-35	033800000	Hammer Assy.			
		Includes:			
27	047010000	Hammer (1)			
28	047020000	Hammer Nose			
29	050340000	Hammer Nose Rivet			
30	072960000	Hammer Nose Spring			
31	051130000	Sear			
32	070190000	Sear Pin			

\* Requires factory installation.  
Note (1): Sold as an assembly only.  
N.I. = Not illustrated.

**SPECIFY MODEL NUMBER, FINISH, PART NUMBER AND PART NAME WHEN ORDERING PARTS.**