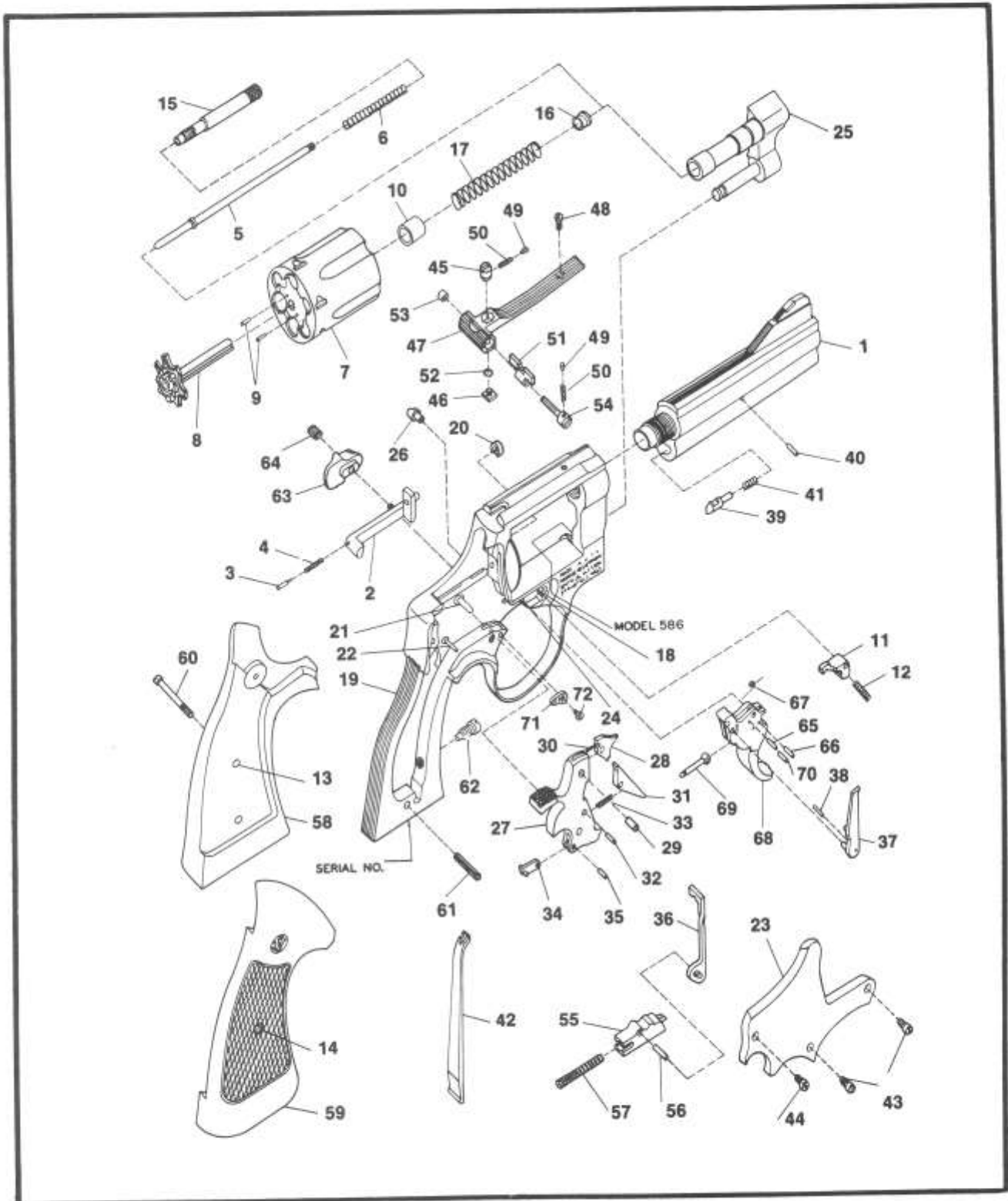


MODEL NO. 586 DISTINGUISHED COMBAT MAGNUM REVOLVER L FRAME .357 CALIBER



EXPLODED VIEW DIAGRAM

MODEL NO. 586

L FRAME .357 CALIBER REVOLVER

PARTS PRICE SCHEDULE

<i>View #</i>	<i>Part Number</i>	<i>Part Description</i>	<i>View #</i>	<i>Part Number</i>	<i>Part Description</i>
1	047310000	*Barrel, 4 $\frac{1}{8}$ " , Red Ramp F.S.	43	050490000	Plate Screw, Crowned
1	047300000	*Barrel, 6" , Red Ramp F.S.	44	030910000	Plate Screw, Flat Head
2	047120000	Bolt	45-54	057870000	Rear Sight Assembly
3	070980000	Bolt Plunger			Includes:
4	070200000	Bolt Plunger Spring	45	051020000	Rear Sight Elevation Nut
5	049890000	Center Pin	46	071800000	Rear Sight Elevation Stud
6	074640000	Center Pin Spring	47	057860000	Rear Sight Leaf
7-10	031480000	*Cylinder Assembly	48	030920000	Rear Sight Leaf Screw
	031490000	Includes:	49	071580000	Rear Sight Plunger
7	031480000	Cylinder (1)	50	071590000	Rear Sight Plunger Spring
8	047200000	* Extractor	51	051090000	Rear Sight Slide, Blue
9	050140000	Extractor Pin	52	051050000	Rear Sight Spring Clip
10	045550000	Gas Ring	53	051070000	Rear Sight Windage Nut
11	053570000	Cylinder Stop	54	071880000	Rear Sight Windage Screw
12	070550000	Cylinder Stop Spring	45-54	040910000	Rear Sight Assy., White Outline
13	040670000	Escutcheon			Includes:
14	040680000	Escutcheon Nut	51	059000000	Rear Sight Slide, White Outline
15	054550000	Extractor Rod	55-56	041650000	Rebound Slide Assy.
16	076850000	Extractor Rod Collar			Includes:
17	075460000	Extractor Spring	55	041650000	Rebound Slide (1)
18-25	034500000	*Frame Assembly	56	050830000	Rebound Slide Pin
		Includes:	57	050740000	Rebound Slide Spring
18	031540000	Cylinder Stop Stud	58-60	164000000	Stock Assy., Tgt. Ckrd. Goncalo Alves
19	034500000	* Frame (1)			Includes:
20	033440000	Hammer Nose Bushing	58	032140000	Stock, Left (1)
21	031550000	Hammer Stud	59	032150000	Stock, Right (1)
22	031540000	Rebound Slide Stud	60	072630000	Stock Screw
23	033150000	* Side Plate	61	050620000	Stock Pin
24	050780200	Trigger Stud	62	050640000	Strain Screw
25	031400000	* Yoke	63	055850000	Thumbpiece
26	032900000	Frame Lug	64	050710000	Thumbpiece Nut
—	075890000	Front Sight Blade, Patridge .823" NI ...	65-70	045960000	Trigger Assembly, 4" Barrel .312
—	075900000	Front Sight Blade, Patridge .908" NI ...			Includes:
—	050440000	Front Sight Pin, NI	65	070190000	Hand Spring Pin
27-35	033800000	Hammer Assy.	66	070190000	Hand Spring Torsion Pin
		Includes:	67	051180000	Hand Torsion Spring
27	031130000	Hammer (1)	68	031170000	Trigger (1)
28	047020000	Hammer Nose	69	070270000	Trigger Lever
29	050340000	Hammer Nose Rivet	70	070190000	Trigger Lever Pin
30	072960000	Hammer Nose Spring	65-70	043560000	Trigger Assembly, 6" Barrel
31	051130000	Sear			Includes:
32	070190000	Sear Pin	68	050720000	Trigger (1)
33	070200000	Sear Spring	71	074430000	Trigger Stop
34	070210000	Stirrup	72	030920000	Trigger Stop Screw
35	070190000	Stirrup Pin			
36	071150000	Hammer Block			
37	075220000	Hand			
38	070110000	Hand Pin			
39	051470000	Locking Bolt			
40	047350000	Locking Bolt Pin			
41	050450000	Locking Bolt Spring			
42	050470000	Mainspring			

* Requires factory installation.
 Note (1): Sold as an assembly only.
 N.I. = Not illustrated.