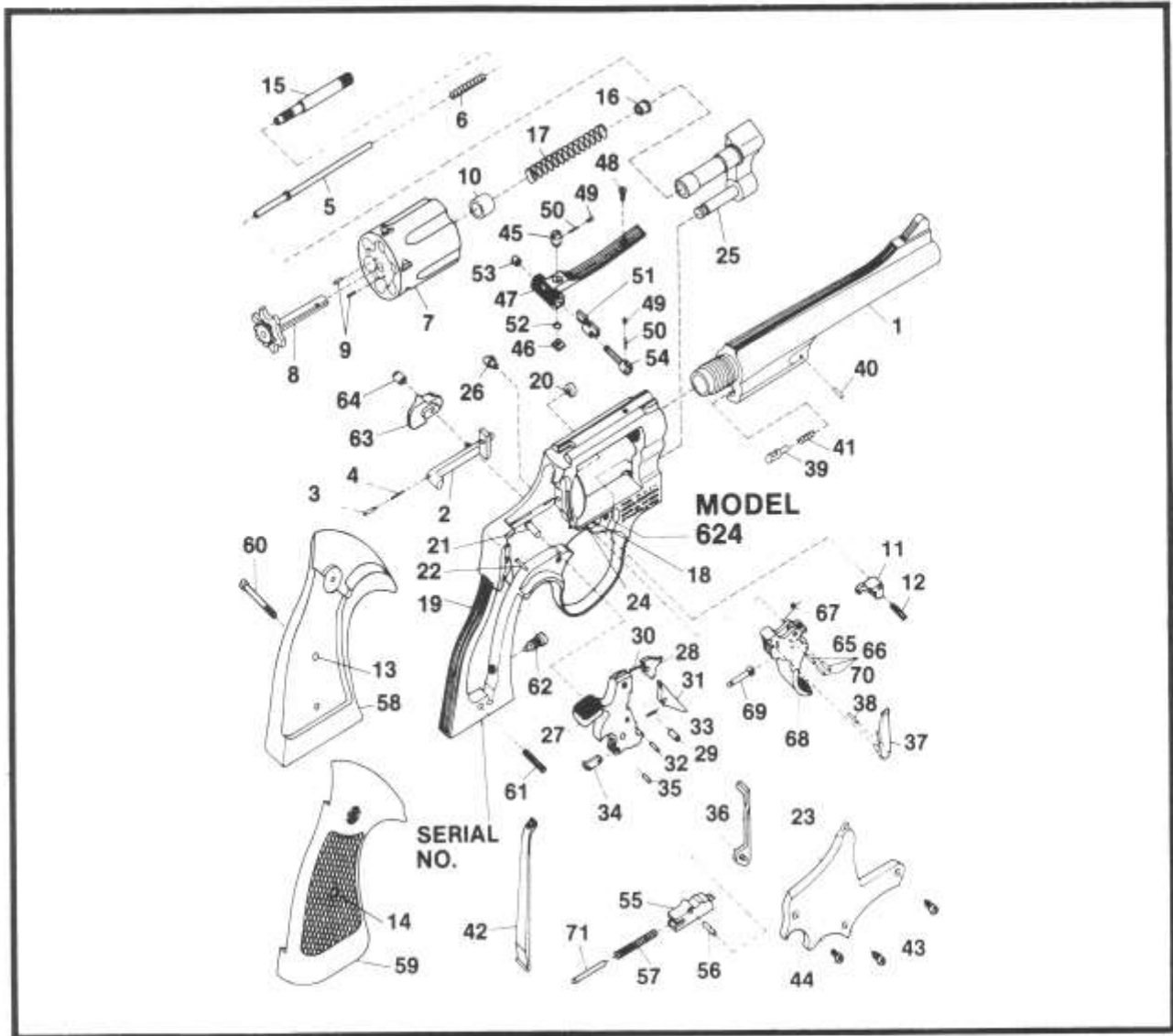


# MODEL NO. 624 .44 TARGET STAINLESS REVOLVER



EXPLODED VIEW DIAGRAM.

## MODEL NO. 624 .44 TARGET STAINLESS REVOLVER PARTS PRICE SCHEDULE

View #	Part Number	Part Description	View #	Part Number	Part Description
1	077190000	Barrel, 3" .....	38	070110000	Hand Pin .....
1	077120000	Barrel, 4" .....	39	070120000	Locking Bolt .....
1	077130000	Barrel, 6½" .....	40	074950000	Locking Bolt Pin .....
2	075330000	Bolt .....	41	070140000	Locking Bolt Spring .....
3	075340000	Bolt Plunger .....	42	050470000	Mainspring .....
4	070200000	Bolt Plunger Spring .....	43	070170000	Plate Screw, Crowned .....
5	077200000	Center Pin .....	44	070370000	Plate Screw, Flat Head .....
6	074640000	Center Pin Spring .....	45-54	077090000	Rear Sight Assembly .....
7-10	077030000	Cylinder Assembly .....			Includes:
		Includes:	45	051020000	Rear Sight Elevation Nut .....
7	077030000	Cylinder .....	46	071800000	Rear Sight Elevation Stud .....
8	075600000	* Extractor .....	47	052190000	Rear Sight Leaf .....
9	072620000	Extractor Pin .....	48	071820000	Rear Sight Leaf Screw .....
10	077060000	Gas Ring .....	49	071580000	Rear Sight Plunger .....
11	070460000	Cylinder Stop .....	50	071590000	Rear Sight Plunger Spring .....
12	070550000	Cylinder Stop Spring .....	51	072560000	Rear Sight Slide .106 .....
13	040670000	Escutcheon .....	51	077110000	Rear Sight Slide .146 .....
14	040680000	Escutcheon Nut .....	52	051050000	Rear Sight Spring Clip .....
15	077140000	Extractor Rod .....	53	051070000	Rear Sight Windage Nut .....
16	076870000	Extractor Rod Collar .....	54	071880000	Rear Sight Windage Screw .....
17	075460000	Extractor Spring .....	55-56	070340000	Rebound Slide Assembly .....
18-25	077040000	*Frame Assembly .....			Includes:
18	076890000	Cylinder Stop Stud .....	55	070340000	Rebound Slide (1) .....
19	077040000	* Frame (1) .....	56	070320000	Rebound Slide Pin .....
20	071240000	Hammer Nose Bushing .....	57	070280000	Rebound Slide Spring .....
21	076900000	Hammer Stud .....	58-60	165100000	Stock Assembly, Tgt. Chkrd.
22	076890000	Rebound Slide Stud .....			Goncalo Alves .....
23	074860000	* Sideplate .....			Includes:
24	070300100	Trigger Stud .....	58	032200000	Stock, left (1) .....
25	074850000	* Yoke .....	59	032210000	Stock, right (1) .....
26	076680000	Frame Lug .....	60	072630000	Stock Screw .....
27-35	077080000	Hammer Assembly .400" .....	61	070220000	Stock Pin .....
		Includes:	62	077300000	Strain Screw .....
27	077070000	Hammer (1) .....	63	070240100	Thumbpiece .....
28	074890000	Hammer Nose .....	64	070250000	Thumbpiece Nut .....
29	057700000	Hammer Nose Rivet .....	65-70	047290000	Trigger Assembly .312" .....
30	074880000	Hammer Nose Spring .....			Includes:
31	070390000	Sear .....	65	070190000	Hand Spring Pin .....
32	070190000	Sear Pin .....	66	070190000	Hand Spring Torsion Pin .....
33	070200000	Sear Spring .....	67	070400000	Hand Torsion Spring .....
34	070210000	Stirrup .....	68	031310000	Trigger (1) .....
35	070190000	Stirrup Pin .....	69	070270000	Trigger Lever .....
27-35	049120000	Hammer Assy., .500" .....	70	070190000	Trigger Level Pin .....
		Includes:	65-70	049150000	Trigger Assembly, .400" .....
27	031270000	Hammer (1) .....	71	075000000	Trigger Stop Rod .....
36	074920000	Hammer Block .....			
37	074930000	Hand .....			

\* Requires factory installation.

Note (1): Sold as an assembly only.

N.I. = Not illustrated.