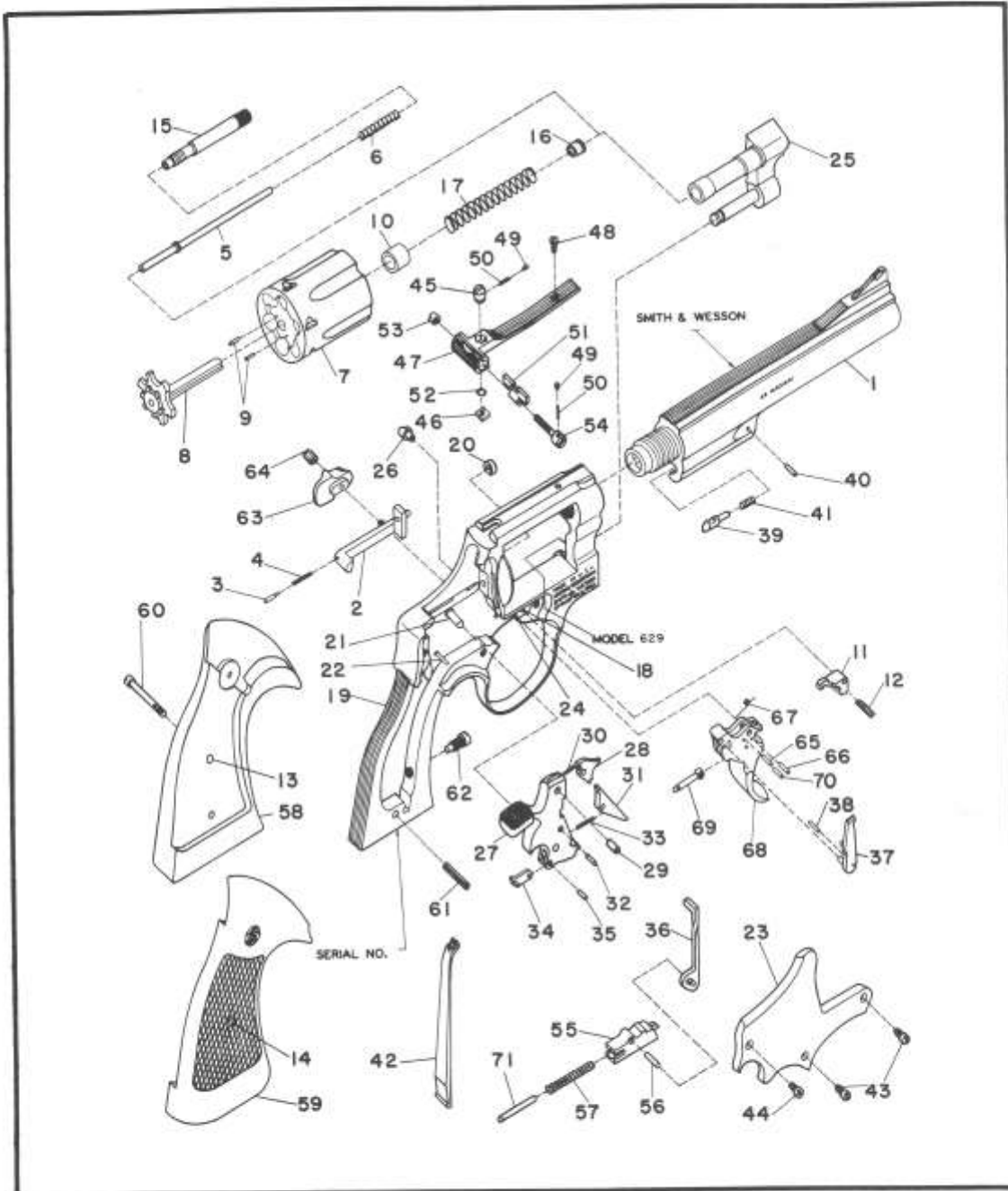


# MODEL NO. 629-1

## .44 MAGNUM STAINLESS REVOLVER

### N FRAME .44 CALIBER REVOLVER



EXPLODED VIEW DIAGRAM.

MODEL 629

## MODEL NO. 629-1 N FRAME .44 CALIBER REVOLVER PARTS PRICE SCHEDULE

View #	Part Number	Part Description	View #	Part Number	Part Description
1	075030000	*Barrel, 4 1/8" .....	45-54	040960000	Rear Sight Ass'y, 4 1/8" & 6"
1	077360000	*Barrel, 6" .....			White Outline
1	075040000	*Barrel, 8 1/8" .....			Includes:
		Barrel Pin, N.I. ....	45	051020000	Rear Sight Elevation Nut .....
2	075330000	Bolt .....	46	071800000	Rear Sight Elevation Stud .....
3	075340000	Bolt Plunger Pin .....	47	052190000	Rear Sight Leaf .....
4	070200000	Bolt Plunger Spring .....	48	071820000	Rear Sight Leaf Screw .....
5	072750000	Center Pin .....	49	071580000	Rear Sight Plunger .....
6	074640000	Center Pin Spring .....	50	071590000	Rear Sight Plunger Spring .....
7-10	075580000	*Cylinder Assembly	51	059000000	Rear Sight Slide, 4 1/8" & 6"
		Includes:			White Outline .....
7	075580000	* Cylinder (1) .....	52	051050000	Rear Sight Spring Clip .....
8	075600000	* Extractor .....	53	051070000	Rear Sight Windage Nut .....
9	072620000	Extractor Pin .....	54	071880000	Rear Sight Windage Screw .....
10	074270000	Gas Ring .....	45-54	040980000	Rear Sight Ass'y, 8 1/8" bbl, White Outline
11	070460000	Cylinder Stop .....			Includes:
12	070550000	Cylinder Stop Spring .....	51	040780000	Rear Sight Slide, 8 1/8", White Outline
13	040670000	Escutcheon .....	55-56	070340000	Rebound Slide Assembly
14	040680000	Escutcheon Nut .....			Includes:
15	074830000	Extractor Rod .....	55	070340000	Rebound Slide (1) .....
16	076870000	Extractor Rod Collar .....	56	070320000	Rebound Slide Pin .....
17	075460000	Extractor Spring .....	57	070280000	Rebound Slide Spring .....
18-25	075590000	*Frame Assembly	58-60	165100000	Stock Ass'y, Sq. Tgt. Ckrd
		Includes:			Includes:
18	076890000	Cylinder Stop Stud .....	58	032200000	Stock, Left (1) .....
19	075590000	* Frame (1) .....	59	032210000	Stock, Right (1) .....
20	071240000	Hammer Nose Bushing .....	60	072630000	Stock Screw .....
21	076900000	Hammer Stud .....	61	070220000	Stock Pin .....
22	076890000	Rebound Slide Stud .....	62	071290000	Strain Screw .....
23	074860000	* Side Plate .....	63	070240100	Thumbpiece .....
24	070300100	Trigger Stud .....	64	070250000	Thumbpiece Nut .....
25	074850000	* Yoke .....	65-70	047290000	Trigger Assembly, Target Serrated
26	076680000	Frame Lug .....			Includes:
27-35	049120000	Hammer Assembly, Target	65	070190000	Hand Spring Pin .....
		Includes:	66	070190000	Hand Spring Torsion Pin .....
27	031270000	Hammer (1) .....	67	070400000	Hand Torsion Spring .....
28	074890000	Hammer Nose .....	68	031310000	Trigger Serrated (1) .....
29	057700000	Hammer Nose Rivet .....	69	070270000	Trigger Lever .....
30	074880000	Hammer Nose Spring .....	70	070190000	Trigger Lever Pin .....
31	070390000	Sear .....	65-70	049170000	Trigger Assembly, Target Smooth
32	070190000	Sear Pin .....			Includes:
33	070200000	Sear Spring .....	68	031320000	Trigger, Smooth (1) .....
34	070210000	Stirrup .....	71	075000000	Trigger Stop Rod .....
35	070190000	Stirrup Pin .....			
36	074920000	Hammer Block .....			
37	074930000	Hand .....			
38	070110000	Hand Pin .....			
39	074940000	Locking Bolt .....			
40	074950000	Locking Bolt Pin .....			
41	070140000	Locking Bolt Spring .....			
42	050470000	Mainspring .....			
43	070170000	Plate Screw, Crowned .....			
44	070370000	Plate Screw, Flat Head .....			

\* Requires factory installation.  
Note (1): Sold as an assembly only.  
N.I. = Not illustrated.

**SPECIFY MODEL NUMBER, FINISH, PART NUMBER AND PART NAME WHEN ORDERING PARTS.**