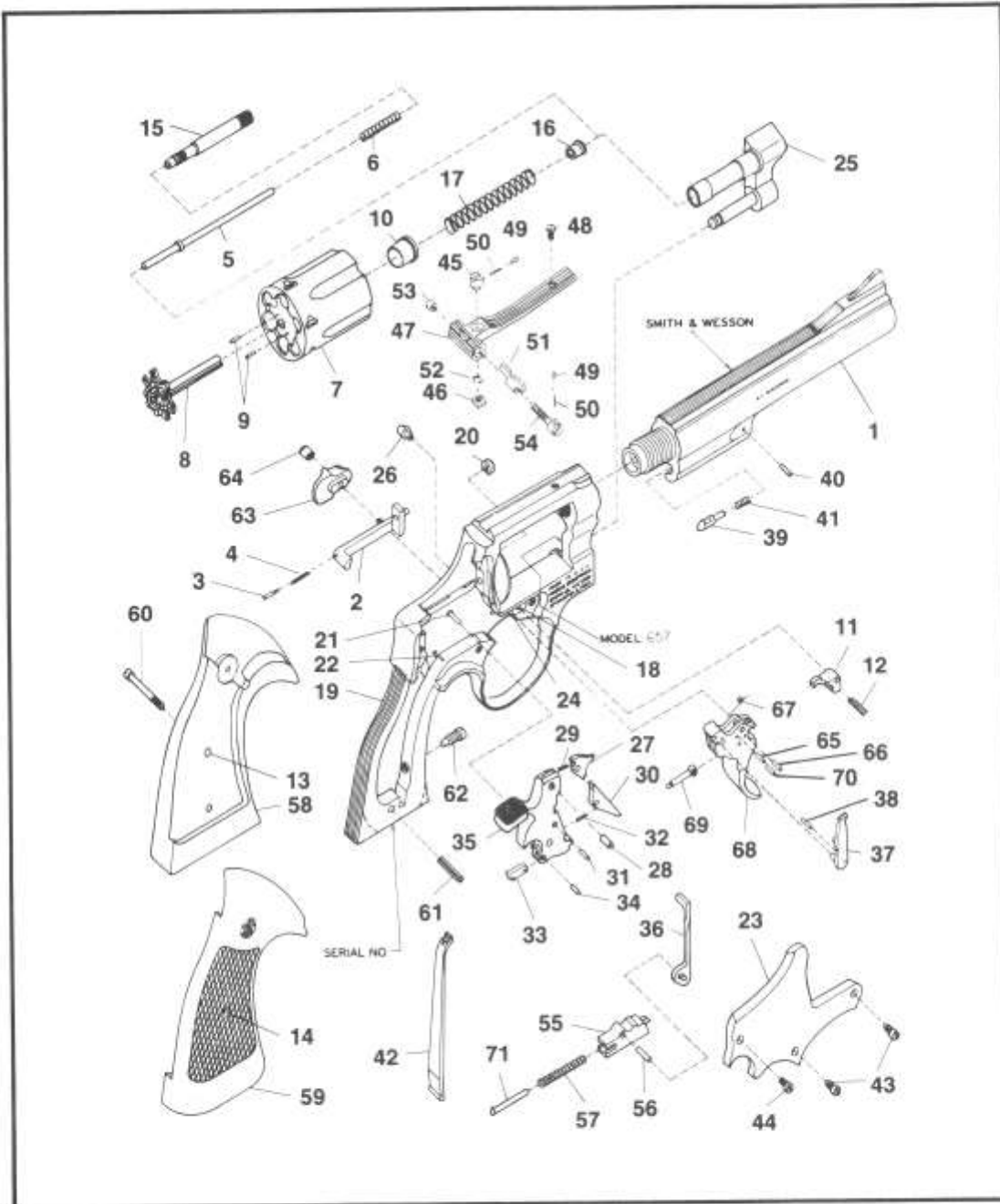


MODEL NO. 657 DISTINGUISHED MAGNUM REVOLVER .41 CALIBER STAINLESS



EXPLODED VIEW DIAGRAM.

MODEL 657

Exploded parts drawing and parts list for Smith & Wesson firearms.

MODEL NO. 657
.41 CALIBER REVOLVER STAINLESS
PARTS PRICE SCHEDULE

View #	Part Number	Part Description	View #	Part Number	Part Description
1	077420000	Barrel 4"	39	074940000	Locking Bolt
—	077430000	Barrel 6" N.I.	40	074950000	Locking Bolt Pin
—	077440000	Barrel 8 1/2" N.I.	41	070140000	Locking Bolt Spring
2	075330000	Bolt	42	050470000	Mainspring
3	075340000	Bolt Plunger	43	070170000	Plate Screw, Crowned
4	070200000	Bolt Plunger Spring	44	070370000	Plate Screw, Flat Head
5	072750000	Center Pin	45-54	052180000	Rear Sight Assembly
6	074640000	Center Pin Spring			Includes:
7-10	077460000	Cylinder Assembly	45	051020000	Rear Sight Elevation Nut
		Includes:	46	071800000	Rear Sight Elevation Stud
7	077460000	Cylinder	47	052190000	Rear Sight Leaf
8	077500000	Extractor	48	071820000	Rear Sight Leaf Screw
9	072620000	Extractor Pin	49	071580000	Rear Sight Plunger
10	074270000	Gas Ring	50	071590000	Rear Sight Plunger Spring
11	070460000	Cylinder Stop	51	051090000	Rear Sight Slide .146 (4, 6 Bbl)
12	070550000	Cylinder Stop Spring	—	040730000	Rear Sight Slide .160 (8 1/2" Bbl) N.I.
13	040670000	Escutcheon	52	051050000	Rear Sight Spring Clip
14	040680000	Escutcheon Nut	53	051070000	Rear Sight Windage Nut
15	074830000	Extractor Rod	54	071880000	Rear Sight Windage Screw
16	076870000	Extractor Rod Collar	55-56	070340000	Rebound Slide Assembly
17	075460000	Extractor Spring			Includes:
18-25	077450000	Frame Assembly	55	070340000	* Rebound Slide
		Includes:	56	070320000	Rebound Slide Pin
18	076890000	Cylinder Stop Stud	57	070280000	Rebound Slide Spring
19	077450000	* Frame	58-60	161130000	Stock Assembly Chkrd
20	071240000	Hammer Nose Bushing			Goncalo Alves, Spldr
21	076900000	Hammer Stud			Includes:
22	076890000	Rebound Slide Stud	58	032200000	* Stock, Left
23	074860000	Sideplate	59	032210000	* Stock, Right
24	070300100	Trigger Stud	60	072630000	Stock Screw
25	074850000	Yoke	61	070220000	Stock Pin
26	076680000	Frame Lug	62	071290000	Strain Screw
27-35	049120000	Hammer Ass'y. .500"	63	070240100	Thumbpiece
		Includes:	64	070250000	Thumbpiece Nut
27	031270000	* Hammer	65-70	049170000	Trigger Assembly .400"
28	074890000	Hammer Nose			Includes:
29	057700000	Hammer Nose Rivet	65	070190000	Hand Spring Pin
30	074880000	Hammer Nose Spring	66	070190000	Hand Spring Torsion Pin
31	070390000	Sear	67	070400000	Hand Torsion Spring
32	070190000	Sear Pin	68	031320000	* Trigger .400" Sm. Com.
33	070200000	Sear Spring	69	070270000	Trigger Lever
34	070210000	Stirrup	70	070190000	Trigger Lever Pin
35	070190000	Stirrup Pin	71	075000000	Trigger Stop Rod
36	074920000	Hammer Block			
37	074930000	Hand			
38	070110000	Hand Pin			

* Requires factory installation.
 N.I. = Not illustrated.

SPECIFY MODEL NUMBER, FINISH, PART NUMBER AND PART NAME WHEN ORDERING PARTS.