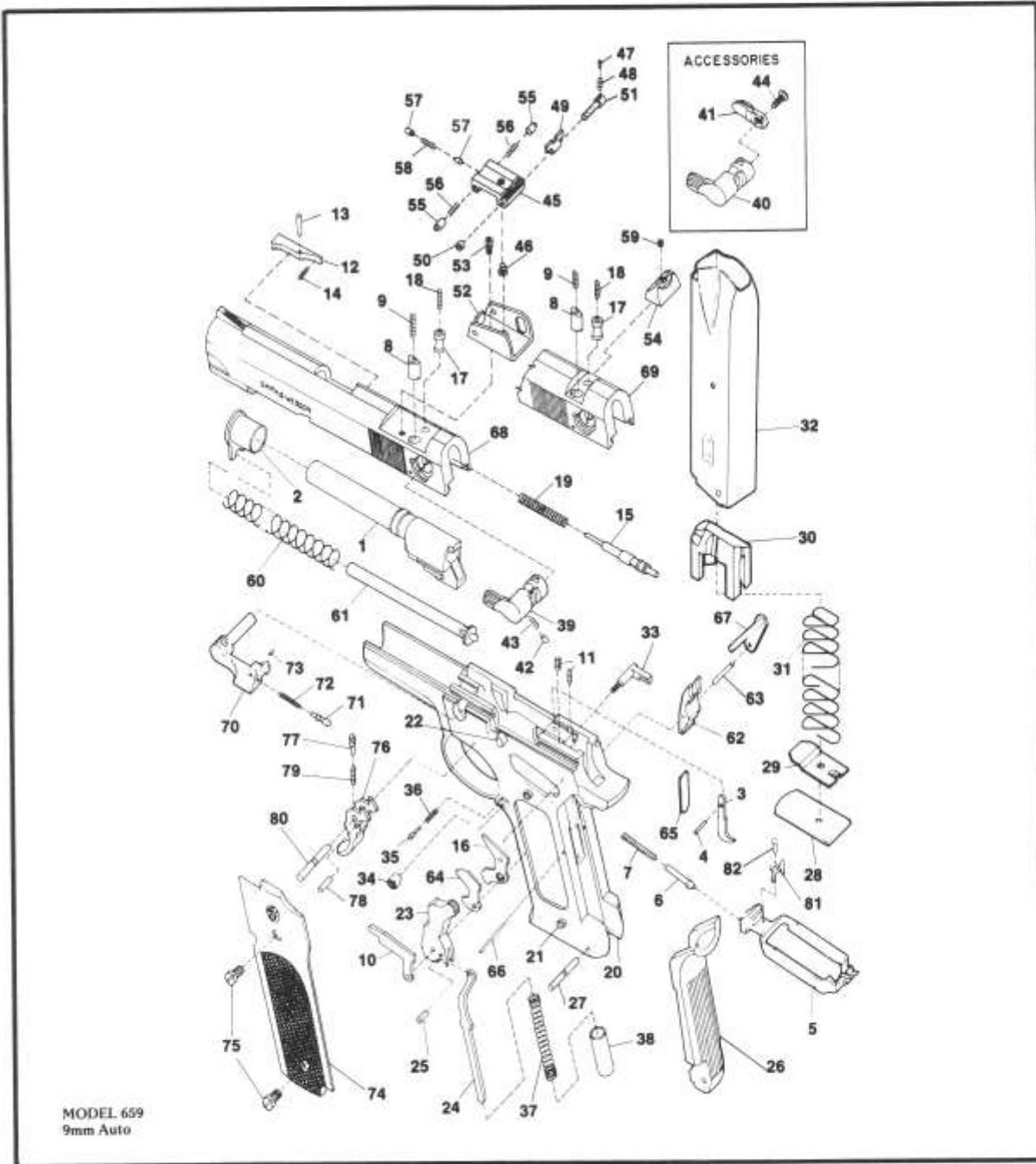


# MODEL NO. 659 9MM AUTOMATIC PISTOL DOUBLE ACTION



EXPLODED VIEW DIAGRAM

MODEL 659

## MODEL NO. 659

### 9MM AUTOMATIC PISTOL DOUBLE ACTION

### PARTS PRICE SCHEDULE

View #	Part Number	Part Description	View #	Part Number	Part Description
1	069590000	Barrel .....	45-51	068390000	Rear Sight Body Ass'y., Adjustable Sight
2	068010000	Barrel Bushing .....			Includes:
3-4	101390000	Disconnecter Assembly	45	068430000	Rear Sight Body .....
		Includes:	46	068450000	Rear Sight Elevation Screw .....
3	069540000	Disconnecter (1) .....	47	071580000	Rear Sight Plunger .....
4	068040000	Disconnecter Pin .....	48	071590000	Rear Sight Plunger Spring .....
5	101380000	Drawbar .....	49	068470000	Rear Sight Slide .....
6	068060000	Drawbar Plunger .....	50	071870000	Rear Sight Windage Nut .....
7	068070000	Drawbar Plunger Spring .....	51	068480000	Rear Sight Windage Screw .....
8	068870000	Ejector Depressor Plunger .....	52	068400000	Rear Sight Base .....
9	068090000	Ejector Depressor Plunger Spring .....	53	100270000	Rear Sight Base Screw .....
10	103710000	Ejector Magazine Depressor .....	54	100790000	Rear Sight Body, Fixed Sight .....
11	068110000	Ejector Spring .....	55	068440000	Rear Sight Body Plunger .....
12	101270000	Extractor .....	56	063800000	Rear Sight Body Plunger Spring .....
13	100050000	Extractor Pin .....	57	063780000	Rear Sight Elevation Plunger .....
14	063310000	Extractor Spring .....	58	063810000	Rear Sight Elevation Spring .....
15	103660000	Firing Pin .....	59	100360000	Rear Sight Set Screw, Fixed Sight .....
16	100110000	Firing Pin Safety Lever .....	60	068500000	Recoil Spring .....
17	069250000	Firing Pin Safety Lever Plunger .....	61	100200000	Recoil Spring Guide Assembly
18	063890000	Firing Pin Safety Lever Spring .....			Includes:
19	100300000	Firing Pin Spring .....	—	068510000	Recoil Spring Guide, N.I. (1) .....
20-22	069300000	*Frame Assembly	—	100190000	Recoil Spring Guide Bushing, N.I. (1)
		Includes:	—	068540000	Recoil Spring Guide Plunger, N.I. (1)
20	060250000	* Frame .....	—	068550000	Recoil Spring Guide Plunger Spring, N.I. (1)
21	069020000	Frame Stud .....	62	100920000	Sear .....
22	069200000	Slide Stop Button .....	63	069130000	Sear Pin .....
23-25	101310000	Hammer Assembly	64	103730000	Sear Release Lever .....
		Includes:	65	104230000	Sear Spring .....
23	103040000	Hammer (1) .....	66	069140000	Sear Spring Retaining Pin .....
24	068720000	Stirrup .....	67	069010000	Sideplate .....
25	068730000	Stirrup Pin .....	68	100630000	Slide, Adjustable Sight .....
—	069030000	Hammer Pin, N.I. .....	69	100650000	Slide, Fixed Sight .....
26	100580000	Insert .....	—	100810000	Slide Assembly, Fixed Sight .....
27	069050000	Insert Pin .....	70-73	103240000	Slide Stop Assembly
28-32	069060000	Magazine Assembly			Includes:
		Includes:	70	103250000	Slide Stop (1) .....
28	069070000	Magazine Butt Plate .....	—	069180000	Slide Stop Pin, N.I. .....
29	069080000	Magazine Butt Plate Catch .....	71	068690000	Slide Stop Plunger .....
30	060240000	Magazine Follower .....	72	063030000	Slide Stop Plunger Spring .....
31	069110000	Magazine Spring .....	73	064700000	Slide Stop Spiral Pin .....
32	069120000	Magazine Tube .....	74-75	161110000	Stock Ass'y., Black Ckrd. Nylon
33	064710000	Magazine Catch .....			Includes:
34	069350000	Magazine Catch Nut .....	74	062710000	Stock, left (1) .....
35	068290000	Magazine Catch Plunger .....	—	062720000	Stock, right (1) N.I. .....
36	068300000	Magazine Catch Plunger Spring .....	75	069190000	Stock Screw .....
37	103620000	Mainspring .....	76-79	103140000	Trigger Assembly
38	068350000	Mainspring Plunger .....			Includes:
39	069600000	Manual Safety .....	76	103150000	Trigger (1) .....
40	101030000	Manual Safety, Ambidextrous .....	77	068780000	Trigger Plunger .....
41	100180000	Manual Safety Right Side Lever .....	78	068790000	Trigger Plunger Pin .....
42	100310000	Manual Safety Plunger .....	79	061220000	Trigger Plunger Spring .....
43	063720000	Manual Safety Plunger Spring .....	80	069050000	Trigger Pin .....
44	105130000	Manual Safety Screw .....	81	101260000	Trigger Play Spring .....
			82	068770000	Trigger Play Spring Rivet .....

\* Requires factory installation.

Note (1): Sold as an assembly only.

N.I. = Not illustrated.

SPECIFY MODEL NUMBER, FINISH, PART NUMBER AND PART NAME WHEN ORDERING PARTS.